



FORTY-FIRST ANNUAL

CRYSTAL PARTY

HONORING
RICHARD A. FRIEDMAN
JAMES S. TISCH

Congratulations!



*As Jim's Brothers, we are
Honored to Celebrate Jim's
Leadership in Building Excellence
throughout the
Mount Sinai Health System.*

FORTY-FIRST ANNUAL

CRYSTAL PARTY

HONORING
RICHARD A. FRIEDMAN
JAMES S. TISCH

Thursday, May 28, 2026
Pier Sixty, 60 Chelsea Piers
New York City

MESSAGE FROM THE CHIEF EXECUTIVE OFFICER

Welcome to the 2026 Crystal Party. Thank you for joining us to celebrate Mount Sinai and to honor Richard A. Friedman and James S. Tisch.



Rich and Jim are two of Mount Sinai's biggest champions. Together, they have devoted more than 60 years of service to Mount Sinai as Trustees.

In many ways, Mount Sinai has evolved into a powerhouse of academic medicine, pioneering scientific research, and exceptional clinical care

because of their leadership, guidance, and dedication.

They have provided generous support through their personal philanthropy, which is manifested by The Friedman Brain Institute, the Mount Sinai Tisch Cancer Center, and the forthcoming Tisch Cancer Hospital—signature initiatives that have helped transform Mount Sinai into the world-class institution it is today.

Together, as Co-Chairmen of the Boards of Trustees, Rich and Jim were ports in a storm during the worst of the COVID-19 pandemic. I had

assumed the role of System Chair of Emergency Medicine just one month before the pandemic officially reached New York City, placing a tremendous strain on our emergency and critical care capacities. I can personally attest that Rich and Jim proved to be fantastic collaborators who not only constantly made themselves available but were active participants. They tapped into every procurable resource to ensure that our doctors, nurses, health care professionals, staff, and administrators had what they needed to serve our patients, despite unimaginable hardships.

As Co-Chairmen of the Boards of Trustees, Rich Friedman and Jim Tisch have Mount Sinai well-positioned to meet the health care demands of tomorrow. For all they have done for the Mount Sinai Health System, they deserve our gratitude.

I'd also like to take this opportunity to welcome our new Chairman, John B. Hess. John and his family have longstanding ties to Mount Sinai. Our rich past with the Hess family promises to guide greater possibilities for our future.

On behalf of every employee at Mount Sinai, thank you very much to those of you in attendance tonight. Your generous support is what makes possible our Health System's excellence in clinical care, education, and biomedical research.

Brendan G. Carr, MD, MA, MS

CHIEF EXECUTIVE OFFICER
PROFESSOR AND KENNETH L. DAVIS, MD,
DISTINGUISHED CHAIR
MOUNT SINAI HEALTH SYSTEM

MESSAGE FROM THE ANNE AND JOEL EHRENKRANZ DEAN
AND THE DEAN FOR CLINICAL AFFAIRS

We are delighted to welcome you to the 2026 Crystal Party in honor of Richard A. Friedman and James S. Tisch.



As longtime Trustees and as Co-Chairmen of the Boards, Rich and Jim have been extraordinary stewards of Mount Sinai's mission for many years. They have demonstrated a deep and abiding commitment to ensuring that Mount Sinai has the

governance and resources it needs to be an extraordinary Health System. Their vision has helped shape Mount Sinai into a premier institution where education, research, and clinical care are deeply interconnected.

We can proudly say that the Icahn School of Medicine at Mount Sinai is a destination for gifted scientists and physicians who possess the ambition and the energy to pursue their dreams. We are training the next generation of leaders in biomedical science and health care delivery by fostering a culture of creativity and collaboration while expanding the limits of discovery.

The Friedman Brain Institute and The Tisch Cancer Center—along with The Tisch Cancer Hospital, which is now under construction—stand as pillars of

innovation, providing our faculty and trainees with unparalleled opportunities to translate scientific breakthroughs into meaningful improvements in patient care.

During the unprecedented challenges of the COVID-19 pandemic, Rich and Jim exemplified steadfast leadership. At a time when our students, trainees, and faculty were called upon to meet extraordinary demands, their guidance and constant support ensured that our institution remained resilient. They were not only advisors but active collaborators, helping to secure critical resources to strengthen the people who define our mission.

As Co-Chairmen of the Boards of Trustees, Rich and Jim have positioned Mount Sinai—and the Icahn School—for continued excellence and leadership in the years ahead. Their commitment to advancing education, research, and patient care leaves an enduring legacy that will benefit generations to come.

On behalf of our students, trainees, faculty, and the entire academic community, we extend our deepest gratitude to Rich and Jim. And to all of you here tonight, thank you for your generosity and partnership, which make possible our shared pursuit of preeminence in medical education, scientific discovery, and compassionate clinical care.

Eric J. Nestler, MD, PhD

ANNE AND JOEL EHRENKRANZ DEAN
ICAHN SCHOOL OF MEDICINE AT MOUNT SINAI
EXECUTIVE VICE PRESIDENT AND
CHIEF SCIENTIFIC OFFICER
MOUNT SINAI HEALTH SYSTEM
PROFESSOR OF NEUROSCIENCE AND PSYCHIATRY

Evan L. Flatow, MD

LASKER PROFESSOR AND DEAN FOR CLINICAL AFFAIRS
ICAHN SCHOOL OF MEDICINE AT MOUNT SINAI
EXECUTIVE VICE PRESIDENT FOR CLINICAL AFFAIRS
MOUNT SINAI HEALTH SYSTEM

MESSAGE FROM THE CHAIRMAN OF THE BOARDS OF TRUSTEES

It is my great honor to welcome you to the 2026 Crystal Party celebrating James S. Tisch and Richard A. Friedman.



As I step into the role of Board Chairman, I do so with a deep appreciation for the dedication and commitment Jim and Rich have shown. Together, they steered the Health System through the worst uncertainties of the COVID-19 pandemic,

tackled our financial challenges head on, and put Mount Sinai on a strong foundation for the future. Jim and Rich have been generous philanthropists and fundraising campaign leaders whose support has been indispensable to Mount Sinai's growth. Their love of Mount Sinai is an inspiration to us all.

Today, the Mount Sinai Health System is a world-class institution. Our doctors, nurses, health care professionals, staff, and administrators are committed to providing care to patients that is compassionate and

empathetic. Our scientists are devoted to pushing the bounds of what is possible to serve our patients and society as a whole. Our faculty is dedicated to providing our students and trainees with unparalleled opportunities to translate discovery into innovations that are transformative for the communities we serve here in New York City and throughout the world.

On behalf of the entire Mount Sinai community, I want to thank Jim and Rich for being such exemplary leaders. They have truly paved the way for what comes next. It is an honor to follow in their footsteps, and I look forward to building on their proud legacy.

And to all of you, the great friends of Mount Sinai, thank you for your partnership in support of Mount Sinai's work. Together, we will carry this mission forward—saving lives through the highest standards of health care and research.

Enjoy tonight's Crystal Party!

John B. Hess

CHAIRMAN, BOARDS OF TRUSTEES
MOUNT SINAI HEALTH SYSTEM

THE BOARDS OF TRUSTEES MOUNT SINAI HEALTH SYSTEM

CHAIRMAN

John B. Hess

CHAIRMEN EMERITUS

Richard A. Friedman
Peter W. May
James S. Tisch

EXECUTIVE VICE CHAIRMAN

Kenneth L. Davis, MD

Andrew M. Alper
Glenn R. August
Neil Barr
Jeff T. Blau
Thomas R. Block
Anthony Cancellieri
Gerald J. Cardinale
Jared A. Cohen
Edith W. Cooper
Henry Cornell
James W. Crystal
Jean C. Crystal
Edgar M. Cullman, Jr.
Susan R. Cullman
Bonnie M. Davis, MD
Joel S. Ehrenkranz
Joseph J. Fennessy
Eric J. Friedman
Robert J. Friedman
Raquel K. Gilinski
Arne Glimcher
Donald J. Gogel
Scott L. Gottlieb, MD
Kimberley D. Harris
Steven I. Hochberg
Nathan Hoffman
Amaziah Howell
Carl C. Icahn
Gail Golden Icahn
Hamilton E. James
Brad S. Karp
James L. Kempner
Thomas L. Kempner, Jr.

Michael S. Klein
Henry R. Kravis
Eric S. Lane
John A. Levin
John M. Liew
Marc S. Lipschultz
Daniel S. Loeb
Dina Powell McCormick
Kenneth B. Mehlman
Eric Mindich
Michael Minikes
Joshua Nash
James C. Neary
Daniel A. Neff
Nnamdi Okike
Lee H. Olesky
Peter R. Orszag
Doug I. Ostrover
Zibby Owens
Lewis C. Pell
Joel I. Pickett
Joseph J. Plumeri
Jennifer Prosek
Carolyn G. Rowan
Judith O. Rubin
The Honorable Robert E. Rubin
Joshua Ruch
Eric M. Ruttenberg
Alejandro Santo Domingo
The Honorable Andrew M. Saul
Robert F. Savage, Jr.
Amy W. Schulman
Adam Shapiro
Joan Solotar
Thomas W. Strauss
The Honorable
William C. Thompson, Jr.
Eric J. Waldman
Andrew M. Wallach
David E. Wheadon, MD
David Windreich
William H. Wright II
Michael J. Zimmerman

EX OFFICIOS

Michael S. Gross
Vicki Gross
Daniel Katz, MD
Joanna Sirulnick

PHYSICIAN REPRESENTATIVES

Ciro Ciccarelli, MD
Domingo Nunez, MD
Madeleine R. Schaberg, MD
Ania Wajnberg, MD
Julia Zakhaleva, MD

EMERITUS TRUSTEES

Bobbie Abrams
Charles R. Bronfman
Jane Friedman
Jerome R. Goldstein
Judah Gribetz
George J. Grumbach, Jr.
Lawrence S. Huntington
Lewis P. Jones
Ellen P. Katz
Stanley Komaroff
Jo Carole Lauder
Joan Sarnoff
Edie A. Schur
John S. Winkleman

As of March 31, 2026

Mount Sinai Health System 2025 Year in Review

Advancing Discoveries and Improving Lives



In 2025, Mount Sinai continued to advance the frontiers of scientific discovery and compassionate care. Our faculty, students, and clinicians made meaningful strides in science and medicine—improving lives and strengthening the health of the communities we serve.

These achievements reflect the power of the Mount Sinai community and the dedication that drives our mission forward. We are honored to share a few of the many milestones made possible through your partnership and generosity.

Research and Clinical Breakthroughs

Mount Sinai remains nationally recognized as a leader in medical innovation across a wide range of specialties. **The Mount Sinai Hospital was ranked among the nation's top 20 hospitals by U.S. News & World Report® for 2025–2026—marking the tenth consecutive year on the publication's Honor Roll.** Three of our hospitals also earned national specialty rankings in cardiology, geriatrics, and cancer. In addition, The Mount Sinai Hospital was recognized on *Newsweek's* lists of the "World's Best Smart Hospitals" and the "World's Best Specialized Hospitals" for 2026.

Mount Sinai Tisch Cancer Center Receives Comprehensive Cancer Center Designation from National Cancer Institute

The Mount Sinai Tisch Cancer Center (TCC) earned the National Cancer Institute's Comprehensive Cancer Center designation—the highest classification for cancer centers in the United States. **The designation places the TCC among the top one percent of cancer centers nationwide** and is a testament to Mount Sinai's excellence in cancer research and innovative patient care.

Delivering Treatments Directly to the Brain

Eric Nestler, MD, PhD, and Yizhou Dong, PhD, developed a new method to deliver treatments directly to the brain through intravenous administration. Their innovative approach uses a conjugate that

can cross the blood-brain barrier—the natural defense that normally blocks large molecules from entering the brain. **This exciting new platform could transform treatment for Alzheimer's disease, amyotrophic lateral sclerosis, and other neurological disorders.**

Personalized Vaccine for Bladder Cancer

Nina Bhardwaj, MD, PhD, and Matthew Galsky, MD, completed a **Phase 1 clinical trial of a novel personalized cancer vaccine for patients with bladder cancer.** Used in combination with atezolizumab, an immunotherapeutic drug, the vaccine effectively targeted cancer cells while sparing healthy tissue—paving the way for testing in broader patient populations and additional cancer types.

Wearable Devices Predict IBD Flare-Ups

A study led by Robert Hirten, MD, found that commercial **wearable devices such as Apple Watches and Fitbits can detect—and even predict—inflammatory bowel disease (IBD) flare-ups.** Physiological indicators like heart rate variability and oxygen saturation changed in response to IBD symptoms—in some cases up to seven weeks before clinical symptoms appeared. The study highlights the potential of wearables in disease monitoring and management.



Transforming Food Allergy Treatment

Researchers at the **Jaffe Food Allergy Institute** participated in the **first-ever investigation of peanut oral immunotherapy in children with high-threshold peanut allergy.** The game-changing study showed that these children can be safely treated in the clinic with small, increasing doses of store-bought peanut butter. This effective and affordable approach could transform food allergy care for hundreds of thousands of children nationwide.

New York's First Heart-Liver-Kidney Transplants

A team of Mount Sinai surgeons led by Anelechi Anyanwu, MD, and Sander S. Florman, MD, performed **the first heart-liver-kidney triple-organ transplants in New York.** Both patients are thriving following the complex 22-hour transplant—a testament to Mount Sinai's unparalleled expertise in organ transplantation.

Breakthrough in Lymphoma Treatment

In April 2025, Joshua Brody, MD, and his team published promising results from a new lymphoma trial. Combining the drug epcoritamab with the chemotherapy GemOx **doubled survival rates in patients with advanced lymphoma.** Dr. Brody and his colleagues are now working to make this approach available for older adults with lymphoma.

Advancing Graduate Education

The Icahn School of Medicine established the **Department of Graduate Education,** with Marta Filizola, PhD, as Founding Chair. The new department will **oversee all Graduate School degree programs, program accreditation, and faculty development**—advancing Mount Sinai's mission to prepare the next generation of leaders in biomedical and health sciences.



Paws and Play Program Welcomes Icee

Mount Sinai Kravis Children's Hospital's **Paws and Play Program welcomed its fifth facility dog, Icee.** Working alongside Child Life Specialists in pediatric hematology and oncology, Icee visits children and families in both outpatient and inpatient settings, offering comfort, encouragement, and companionship. Icee is quickly proving to be an excellent addition to the team, strengthening care for our community one snuggle at a time.

Preeclampsia's Lasting Cardiovascular Impact

A study led by Leslee Shaw, PhD, and Deepak Bhatt, MD, MPH, found a **strong association between the duration of elevated blood pressure in mothers with preeclampsia and later cardiovascular disease**—in both mother and child. The findings underscore the importance of vigilant blood pressure monitoring throughout pregnancy and the postpartum period.

Enhancing Primary Care in Guyana

Mount Sinai and the **Arnhold Institute for Global Health** extended their consultancy with the Hess Corporation and Guyana's Ministry of Health for five more years. The partnership will **strengthen Guyana's health infrastructure and expand an accessible primary care system,** with a focus on deploying innovative digital technologies.

Familial Risk of Postpartum Psychosis

New research by Veerle Bergink, MD, PhD, demonstrates a **strong familial component to postpartum psychosis.** Findings showed that a mother is more than 10 times more likely to develop postpartum psychosis if her sister had the condition, laying the groundwork for earlier recognition and prevention of this devastating psychiatric illness.

Center for Stress, Resilience and Personal Growth at Mount Sinai

Mount Sinai's **Center for Stress, Resilience and Personal Growth** is **expanding its behavioral health services to the general public**—building on a program originally developed to support the well-being of Mount Sinai's workforce during the COVID-19 pandemic.

New Entities Driving Discovery and Care

Center for Artificial Intelligence in Children's Health

The Icahn School of Medicine at Mount Sinai launched the **Center for Artificial Intelligence in Children's Health**—one of the nation's first medical centers to integrate artificial intelligence (AI) into pediatric care. Led by Benjamin Glicksberg, PhD, the Center will create an AI-driven Children's Health Data Hub to centralize patient data and lead clinical trials that will enhance patient monitoring and care at Mount Sinai Kravis Children's Hospital.

AI Small Molecule Drug Discovery Center

Avner Schlessinger, PhD, Ming-Ming Zhou, PhD, and Marta Filizola, PhD, launched Mount Sinai's new **AI Small Molecule Drug Discovery Center**, which provides hands-on training and fosters collaborations with pharmaceutical companies, biotech firms, and academic institutions to accelerate AI-driven drug development.

Asness Family Center of Excellence in Eczema and Allergic Conditions

A transformative gift from Clifford S. and Laurel Asness established the **Asness Family Center of Excellence in Eczema and Allergic Conditions** within the Kimberly and Eric J. Waldman Department of Dermatology. Led by Emma Guttman-Yassky, MD, PhD, the Center will expand multidisciplinary research and clinical programs to develop new therapies for eczema, asthma, and other allergic diseases. Inspired by their son's experience with severe eczema, the Asness family's gift will accelerate innovation and bring lasting relief to patients and families worldwide.

Clinical Neurosciences Center

In late 2025, Mount Sinai will relocate most of its renowned neurology-focused research and care to the new **Clinical Neurosciences Center** at Mount Sinai West. The Center will unite programs including the Center for Neuromodulation, the Epilepsy Center, the Bonnie and Tom Strauss Movement Disorders Center, and the Nash Family Center for Advanced Circuit Therapeutics—offering patients seamless, coordinated care and advancing Mount Sinai's leadership in neuroscience.

Nancy Lieberman Back-to-Life Center

A gift from Mark Ellman established the **Nancy Lieberman Back-to-Life Center**, inspired by the resilience of Nancy Lieberman, a patient who lived life to the fullest after becoming quadriplegic. Led by Angela Riccobono, PhD, and slated to open in 2026, the first-of-its-kind center will



empower patients with spinal cord injuries through cutting-edge assistive technologies, peer engagement, and personalized support.

Department of Stem Cell Biology and Regenerative Medicine

This newly created Department unites the former Department of Cell, Developmental and Regenerative Biology with the Institute for Regenerative Medicine. Building on Mount Sinai's established strengths in basic cell, developmental, and regenerative biology, the new department will advance the use of human stem cell-derived systems for disease modeling, therapeutic discovery, and clinical translation.

The Institute for Translational Medicine and Pharmacology

Mount Sinai launched the **Institute for Translational Medicine and Pharmacology** under the leadership of Mone Zaidi, MD, PhD. Evolving from the former Center, the Institute accelerates the translation of basic science discoveries into novel therapeutics, technologies, and clinical practices. With expanded infrastructure and strategic partnerships, it will serve as a national hub for translational science—advancing first-in-human trials and addressing the health needs of aging and underserved populations.

Steven S. Elbaum Family Center for Caregiving

Recognizing the critical role of caregivers, Mount Sinai launched the **Steven S. Elbaum Family Center for Caregiving**. Led by Allison Applebaum, PhD, the Center provides specialized programming and services for caregivers of loved ones with serious illness, trains clinicians on caregiver support, and advocates for policies that strengthen resources for caregivers nationwide.



Transforming Our Campuses for the Future



Saul Family Emergency Department

Mount Sinai celebrated the completion of a six-phase redesign of its Emergency Department, now named the **Saul Family Emergency Department** in recognition of generous support from Andrew and Denise Saul. **The five-year transformation expanded clinical space, enhanced privacy and comfort, and improved care for more than 100,000 patients who visit the Emergency Department each year.** Highlights include a new adult critical care unit, an integrated triage area, and the Mount Sinai Children's Emergency Department, a child-friendly space that opened in 2022.

Mount Sinai Morningside Rehabilitation Facility

In September 2025, **Mount Sinai Morningside** launched an **inpatient rehabilitation facility offering innovative care for patients recovering from brain and spinal cord injuries, stroke, cancer treatment, and surgery.** Located at 1111 Amsterdam Avenue, the facility features smart rooms, virtual-reality platforms, and ceiling lifts to advance recovery and independence.

Mount Sinai South Nassau Expansion

In August 2025, **Mount Sinai South Nassau** opened a **four-story, \$70 million ambulatory center in Wantagh that expands services in cancer care, cardiology, and women's health.** The hospital also completed a **major renovation of its emergency department**, doubling capacity to provide more efficient emergency care for the Long Island community.

Klingenstein Pavilion Renovations

A multiyear transformative upgrade of **Klingenstein Pavilion**, supported by Mount Sinai Health System Trustee Raquel Gilinski and her husband Jaime, is **enhancing the patient and family experience** for those who give birth at the Alexandra Cohen Center for Labor and Birth and receive care at the Jo Carole and Ronald S. Lauder Center for Maternity Care. In 2025, renovations were completed on the antepartum floor and one postpartum floor, adding expanded nursery and monitoring capabilities to support mother–baby care.

Mount Sinai Fuster Heart Hospital Launches Comprehensive Health Program

Mount Sinai Fuster Heart Hospital announced the grand opening of its Comprehensive Health Program, **expanding access to preventive cardiology services on Manhattan's Upper West Side.** Located at Mount Sinai West, the Program provides a same-day, personalized heart health assessment designed for early detection and prevention of cardiovascular disease. Patients receive a full suite of diagnostic evaluations—including blood analysis, imaging, and specialized cardiovascular testing—within a streamlined, one-stop visit. With this new and thorough service, Mount Sinai is ensuring a brighter future for heart health.

Faculty Awards and Distinctions



Election to the National Academy of Sciences

Eric Nestler, MD, PhD, was elected to the National Academy of Sciences in recognition of his pioneering research on the biological basis of addiction and depression.



ESC Gold Medal Award

The European Society of Cardiology presented its top honor—the ESC Gold Medal—to **Roxana Mehran, MD**. The award recognizes her trailblazing contributions to interventional cardiology and clinical trial design.



American Association for Cancer Research Fellow

Nina Bhardwaj, MD, PhD, was named a 2025 Fellow of the American Association for Cancer Research's Academy. This distinction honors Dr. Bhardwaj's groundbreaking work in cancer immunology.



Leadership of Mount Sinai Morningside and Mount Sinai West

Tracy L. Breen, MD, was named President of Mount Sinai Morningside and Mount Sinai West, building on her longstanding role as Chief Medical Officer for both hospitals. A respected leader and innovator, Dr. Breen is advancing system-wide alignment through the One Mount Sinai initiative, and championed programs like the "Daily Check-In," recognized by *Harvard Business Review* as a national best practice in patient safety.



New Dean for Academic and Scientific Affairs

Sarah Millar, PhD, was appointed Dean for Academic and Scientific Affairs and Chair of the new Department of Stem Cell Biology and Regenerative Medicine at the Icahn School of Medicine. In these roles, she drives strategic priorities across research and education, including faculty recruitment and retention, scientific and financial oversight of the Icahn School's Core Facilities, and collaborates with Dr. Eric Nestler on educational programs that strengthen Mount Sinai's academic mission.

Thank You

Thanks to your generous support, our physicians, researchers, and students are exploring bold new ideas and driving meaningful discoveries. As we look ahead, we are confident that we will achieve even greater breakthroughs in science and medicine. Thank you for your continued trust in our mission to enhance the health and well-being of patients in our community and throughout the world.

By April 22, 2019, Peter W. May had served as the Chairman of the Mount Sinai Health System Boards of Trustees for 17 remarkable years, and was ready for a well-earned retirement from the role. When the time came to present the Chairman's gavel to his successor, Mr. May produced two of them: one for Richard A. Friedman, and one for James S. Tisch.

For the subsequent seven years, the Boards of Trustees would have two Co-Chairmen.

“Peter has been such an exemplary Chairman,” Mr. Friedman and Mr. Tisch wrote in a joint statement at the time, “that the Boards felt they needed two of us to replace him.”

When Mr. Friedman and Mr. Tisch took over, Mount Sinai was indeed on an upward trajectory. Across Mr. May's tenure, what was then the Mount Sinai Medical Center had grown prodigiously, transforming into a full-fledged Health System that included numerous hospitals and more than 400 ambulatory clinics and physician practices. The Icahn School of Medicine at Mount Sinai also became a powerhouse of academic medicine and a pioneer of scientific research.

Though Mr. Friedman and Mr. Tisch had been members of the Boards since 2001 and 1988, respectively, Mr. Tisch acknowledged the “enormous expectations” they faced as Co-Chairmen. Seven years on, they have handed the gavel—yes, just one this time—to John B. Hess as incoming Chairman of the Mount Sinai Health System Boards of Trustees, and it is safe to say that Mr. Friedman and Mr. Tisch have carved out a niche of excellent leadership at Mount Sinai all their own.

As Co-Chairmen, Mr. Friedman and Mr. Tisch proved to be exemplary collaborators who thrived by seamlessly sharing leadership responsibilities. They are generous philanthropists who were adept at fundraising and building a deep culture of donor support, with Mr. Tisch serving as the “Sinai Citizen”—



an ambassador who enjoyed reaching out to donors of all stripes—and Mr. Friedman acting as a force multiplier who leveraged his vast network of connections to engage new philanthropic partners.

Mr. Tisch and Mr. Friedman secured their family legacies at Mount Sinai by naming institutes that have advanced the science of cancer and brain health, respectively, greatly enhancing Mount Sinai's reputation in those fields while also immeasurably improving the lives of countless patients. Together, they have personally donated more than \$158 million to Mount Sinai. As the respective chairs of the two most significant fundraising campaigns in Mount Sinai's history, they helped raise nearly \$4 billion in donations to support the institution's academic, research, and clinical care enterprises. And since the launch of that first fundraising initiative 19 years ago, Mount Sinai has secured an estimated total of more than \$5 billion in philanthropic giving.

“Rich Friedman and Jim Tisch have been indispensable to Mount Sinai,” said Mark Kostegan, FAHP, Chief Development Officer and

“Rich Friedman and Jim Tisch have been indispensable to Mount Sinai.”

Mark Kostegan, FAHP
Chief Development Officer and Senior Vice President of Development
Mount Sinai Health System

Senior Vice President of Development for the Mount Sinai Health System. “Their philanthropic support extends far beyond their own substantial personal contributions to the institution’s mission. Their stewardship of the two largest fundraising campaigns we’ve ever had speaks for itself. Mount Sinai is now world-renowned for its compassionate patient care, cutting-edge scientific research, and first-rate medical education in large part because of Rich and Jim’s dedication, partnership, and initiative with regard to our system-wide philanthropic efforts.”

“Rich Friedman and Jim Tisch have provided extraordinary leadership and vision during their tenure as Co-Chairs of the Boards of Trustees,” said Paul J. Kenny, PhD, Director of The Friedman Brain Institute and the Marie-Josée and Henry R. Kravis Drug Discovery Institute, Chair of the Nash Family Department of Neuroscience, and Nash Family Professor of Neuroscience at the Icahn School. “Their partnership has been defined not only by a deep personal commitment to Mount Sinai, but also by a shared belief in the transformative potential of biomedical research and patient-centered care.”

As Co-Chairmen, Mr. Tisch and Mr. Friedman guided the Mount Sinai Health System through the COVID-19 pandemic, one of the most formidable challenges in the institution’s history. They also set up the Health System for a bright future by leading the search that resulted in the selection of Brendan G. Carr, MD, MA, MS, as Chief Executive Officer.

“Rich and Jim have made extraordinary contributions to Mount Sinai and have been amazing partners to me personally over the last two years,” said Dr. Carr, who is also the Kenneth L. Davis, MD, Distinguished Chair at Mount Sinai. “The impact that their families have had on Mount Sinai is generational. Cancer care and neuroscience have been transformed by their efforts and we are the amazing organization that we are today because of their commitment, dedication, and deep love for this organization.”

That commitment, dedication, and deep love for Mount Sinai extends much deeper than Mr. Friedman’s and Mr. Tisch’s tenure as Co-Chairmen.



JAMES S. TISCH

Mr. Tisch is Chair of Loews Corporation, where he has worked since 1977. He stepped down as CEO and President in 2024, with his son assuming both roles. Mr. Tisch also serves on the Executive Committee of the Partnership for New York City, is Chairman Emeritus of WNET, and a board member of The New York Public Library. He is an Honorary Member and past Chairman of the Board of Governors of the Jewish Agency for Israel, past Chairman of the Board of the Conference of Presidents of Major American Jewish Organizations, past Chairman of the Board of United Jewish Communities, past President of UJA-Federation of New York, and a former director on the board of the Federal Reserve Bank of New York.

The Campaign for Mount Sinai launched in 2007, with a goal of raising \$1 billion; Mr. Tisch was the campaign’s Chairman. By the time the campaign—the first of the two most significant fundraising pushes in the institution’s history—ended in 2013, it exceeded its goal by 50 percent, having raised a total of \$1.5 billion.

A merger with Continuum Health Partners around the time the campaign concluded established Mount Sinai’s broad footprint across New York City, positioning it to be the health system that cared for the most New Yorkers. Mount Sinai was also well on its way to becoming a research titan, with 16 research centers and institutes having been formed and housed in the new Leon and Norma Hess Center for Science and Medicine.

One of those new research centers was The Tisch Cancer Institute, a state-of-the-art, patient-centered, comprehensive care and research entity that launched in 2008 thanks to a \$40 million pledge from Mr. Tisch and his wife, Dr. Merryl H. Tisch.

“Cancer is one of the most pressing health concerns of our time. It transcends geographic and socioeconomic borders and touches us all,” Mr. Tisch said at the time. “Merryl and I believe this Institute will enable Mount Sinai to revolutionize how we diagnose and treat cancer, and also set a new standard for the care of cancer patients.”

The Tisch Cancer Institute indeed set a new standard. By 2015, it was recognized as a National Cancer Institute (NCI)-Designated Cancer Center. *U.S. News and World Report* now ranks The Mount Sinai Hospital No. 2 in New York City in cancer care, and No. 6 overall.

In 2021, Mr. and Dr. Tisch pledged an additional \$60 million to support construction of The Tisch Cancer Hospital and establish The Tisch Cancer Center, which promised to broaden access to breakthrough therapies, diagnostics, and clinical trials, furthering Mount Sinai's mission to provide advanced, personalized treatment and holistic care for patients.

“Some contributions build buildings, others build belief. Mr. Tisch, together with Dr. Merryll Tisch, has done both,” said Ashutosh Tewari, MBBS, MCh, FRCS (Hon.), Professor and System Chair, Milton and Carroll Petrie Department of Urology and Director of the Center of Excellence for Prostate Cancer at The Tisch Cancer Center. “Their support has given us the means to advance cancer care, the confidence to imagine what is possible, and the drive to pursue it.

“From my vantage point as Surgeon-in-Chief, I have the privilege of witnessing, up close, the impact of their commitment to The Tisch Cancer Hospital. It is an act of tremendous generosity, yes, but is also an enduring investment in humanity.”

Over the years, Mr. Tisch has been known for writing grateful notes to Mount Sinai donors, a thoughtful touch of stewardship and acknowledgement that is a tremendous source of personal and institutional pride. That pride extends to Mr. Tisch's extended family, too: In 2023, Mr. Tisch's cousin, Jonathan Tisch, and Jonathan's wife, Lizzie, named The Lizzie and Jonathan Tisch Center for Prostate Health at Mount Sinai.

In October 2025, the NCI recognized The Tisch Cancer Institute as a Comprehensive Cancer Center—one of only 57 in the country, or about one percent of all cancer centers in the United States. After that designation, Mount Sinai officially rebranded the institute as The Tisch Cancer Center, and construction on a new Tisch Cancer Hospital recently began.

“This branding change emphasizes that we provide the best, most complete care at Mount Sinai,” said Ramon E. Parsons, MD, PhD, Director of The Tisch Cancer Center. “Jim Tisch has tirelessly worked for eighteen years to improve the care for cancer patients at Mount Sinai.”

The forthcoming Tisch Cancer Hospital—and the evolution of The Tisch Cancer Center's research enterprise and compassionate patient care initiatives—is a testament to that.



“The impact that their families have had on Mount Sinai is generational. Cancer care and neuroscience have been transformed by their efforts and we are the amazing organization that we are today because of their commitment, dedication, and deep love for this organization.”

Brendan G. Carr, MD, MA, MS, Chief Executive Officer
Professor and Kenneth L. Davis, MD, Distinguished Chair, Mount Sinai Health System

RICHARD A. FRIEDMAN

Mr. Friedman is Chairman of Asset Management at Goldman Sachs, where he has worked since 1981. He is a member of the company's Management Committee and the Co-Chairman of the Corporate, Real Estate, Infrastructure, and Cooperation Fund Investment committees. At Mount Sinai, Mr. Friedman is also Chairman of the Executive, Strategic Planning, and Campaign Steering Committees. He serves on The Friedman Brain Institute's Philanthropic Leadership Council and the Institute for Health Equity Research Task Force.

Mount Sinai and Goldman Sachs have a longstanding relationship that dates back to the 1850s, or shortly after Mount Sinai was founded as The Jews' Hospital in the City of New York. Those ties underscore a tradition of excellence, compassion, and shared responsibility, including a long roster of Goldman Sachs employees serving as Mount Sinai Trustees.

Gustave Levy, as senior partner at Goldman Sachs, oversaw the creation of the Mount Sinai School of Medicine while serving as Chairman of the Board at Mount Sinai in the 1960s. And Dr. Bernard Sachs, a brother of one of Goldman Sachs' founders, was a Mount Sinai physician whose research led to the discovery of Tay-Sachs Disease.

Mr. Friedman referred to this shared history in a 2010 *Wall Street Journal* article about the \$20 million gift that he and his wife, Susan, made to Mount Sinai to establish The Friedman Brain Institute (FBI), which bears his family's name.

“The gift isn't just a commitment from our family, but part of a larger connection,” Mr. Friedman told the *Journal*. “I'm carrying a torch between two great institutions.”

Mr. Friedman's son, Joshua, had taken a college course in neuroscience and did a summer internship with Eric J. Nestler, MD, PhD, The Friedman Brain Institute's founding Director who is now the Anne and Joel Ehrenkranz Dean of the Icahn School and Executive Vice President and Chief Scientific Officer of the Mount Sinai Health System. This sparked a deep and abiding interest in the field of neuroscience for Mr. Friedman. Joshua S. Friedman would later earn his MD at the Icahn School, where he is now a clinician and assistant professor.

Part of Mr. Friedman's initial gift to establish FBI, which is also situated in the Hess Center, allowed Mount Sinai to hire at least 20 neuroscientists to expand its clinical research efforts. That ability to recruit and retain top-tier physician-scientists has been crucial to Mount Sinai's enormous success and widespread growth in the last 20 years. Mr. Friedman then successfully lever-

“Together, they exemplify how visionary philanthropy, coupled with thoughtful leadership, can accelerate innovation and improve lives at scale.”

Paul J. Kenny, PhD
Director, The Friedman Brain Institute and the Marie-Josée and Henry R. Kravis Drug Discovery Institute Chair, Nash Family Department of Neuroscience and Nash Family Professor of Neuroscience Icahn School of Medicine at Mount Sinai

aged his personal friendships and connections at Goldman Sachs to help FBI reach its initial \$100 million fundraising goal. He has also been a generous donor to Mount Sinai’s medical education and scholarship efforts.

When Mount Sinai began its Limitless Campaign in 2017, Mr. Friedman was ideally positioned to serve as its Chairman. That campaign ended in 2024—a year ahead of schedule—after exceeding its \$2 billion goal, raising a total of \$2.3 billion. The majority of that campaign coincided with Mr. Friedman and Mr. Tisch’s term as Co-Chairmen.

“Together,” said Dr. Kenny, “they exemplify how visionary philanthropy, coupled with thoughtful leadership, can accelerate innovation and improve lives at scale.”

The Friedman Brain Institute has grown to become a global leader in the frontiers of brain and nervous system disorders and the advancement of groundbreaking treatments through translational research. FBI physician-scientists have made impactful discoveries in addiction, autism, dementia and other neurodegenerative disorders, and psychosis. Mount Sinai Neurosurgery ranks No. 1 in National Institutes of Health funding in New York State and No. 10 in the nation.

“I know Rich well as the founder of the FBI with me,” said Dean Nestler. “We’ve worked extremely closely for almost 18 years. Rich, with his wife Susan, made it possible for the FBI to grow into clearly one of the world’s premier brain institutes. I will forever be grateful for his support and friendship.”

AT THE EPICENTER

Eleven months into Mr. Friedman and Mr. Tisch’s tenure as Co-Chairmen, the COVID-19 pandemic officially reached New York City. Much of the rest of the world might have shut down, but Mount Sinai was—in the words of former Dean Dennis S. Charney, MD—the epicenter of the outbreak. It quickly became imperative to marshal the important resources that frontline workers—doctors, nurses, health care professionals, staff, administrators—would need to treat an influx of patients at a time of extreme uncertainty.

Mr. Friedman arranged to have hundreds of thousands of N95 masks flown in from China on a private plane.

“It was pretty clear that we weren’t going to be able to get them shipped over any other way,” Mr. Friedman remembered. “The thing that

resonated with me was realizing what I could do to help our team, whether it’s the doctors, the administration, the staff. So this was the first aspect of it, getting protective equipment so that we could actually serve the community.”

Again tapping into his numerous relationships, particularly at Goldman Sachs, Mr. Friedman also took the lead in driving Mount Sinai’s pandemic-era fundraising, which resulted in more than \$100 million in donations—more than any other academic medical institution in the country. A connection with Flowcode founder and CEO Tim Armstrong led to a partnership that leveraged Flowcode’s direct-to-consumer technology for COVID-19 relief efforts—a collaboration that led to more than 7,000 gifts being directed to the front lines at Mount Sinai. Mr. Friedman also championed Fit for the Frontline, a campaign that encouraged people to stay active, despite staying home, while also fundraising for Mount Sinai.

All the while, Mr. Friedman and Mr. Tisch were closely monitoring and leading Mount Sinai’s COVID-19 relief efforts, from meeting regularly with physicians and administrators to ensuring that necessities like food, hotel rooms, and transportation were available to the Health System’s frontline teams.

“That was, I’d say, a very big part of the first—I don’t know—18 months?” Mr. Friedman said. “It’s one thing to sit on the board and look at the numbers and hear the issues. It’s another thing to literally be there. I really got to learn a lot more about what Mount Sinai really was.”

POSITIONED FOR THE FUTURE

When it came time to find a replacement for Dr. Davis, who had been CEO since 2003, Mr. Friedman and Mr. Tisch spearheaded the effort. They landed on Dr. Carr, who was one of the Health System leaders they met with frequently during the pandemic as Mount Sinai’s Chair of Emergency Medicine.

“Dr. Carr is a visionary leader and physician who will chart an exciting course for the Health System,” Mr. Friedman and Mr. Tisch said after Dr. Carr was named CEO. “We are certain that he will propel Mount Sinai to further success in our mission to provide compassionate patient care through unrivaled education, research, and outreach in the many diverse communities we serve.”

Mr. Friedman and Mr. Tisch’s co-chairmanship is perhaps best marked by their collaborative spirit. They didn’t always agree, but they did share a desire to deliberate thoughtfully and make decisions that were in Mount Sinai’s best interests. Health care is evolving rapidly, but from the success of the Limitless Campaign to the hiring of Dr. Carr as CEO and ongoing improvements in governance and strategy, Mr. Friedman and Mr. Tisch have positioned Mount Sinai to face that ever-changing future. They have not only met those “enormous expectations” that were there when they took over as Co-Chairmen—they have actually surpassed them.

“I really do believe,” Mr. Friedman said, “we’ve left Mount Sinai in a better place than when we started.”



MOUNT SINAI HEALTH SYSTEM HOSPITALS



THE MOUNT SINAI HOSPITAL

David L. Reich, MD
Chief Clinical Officer, Mount Sinai Health System
President, The Mount Sinai Hospital

www.mountsinai.org/locations/mount-sinai
212-241-6500
212-590-3300



MOUNT SINAI BROOKLYN

Scott Lorin, MD, MBA
President and Chief Operating Officer,
Mount Sinai Brooklyn

www.mountsinai.org/locations/brooklyn
718-252-3000
718-312-7300



MOUNT SINAI SOUTH NASSAU

Adhi Sharma, MD
President, Mount Sinai South Nassau

www.mountsinai.org/southnassau
516-632-3000



MOUNT SINAI QUEENS

Cameron R. Hernandez, MD, FACHE
President and Chief Operating Officer, Mount Sinai Queens

www.mountsinai.org/locations/queens
718-932-1000



MOUNT SINAI MORNINGSIDE

Tracy L. Breen, MD, FACP
President and Chief Medical Officer,
Mount Sinai Morningside

www.mountsinai.org/morningside
212-523-4000

MOUNT SINAI WEST

Tracy L. Breen, MD, FACP
President and Chief Medical Officer,
Mount Sinai West

www.mountsinai.org/locations/west
212-523-4000



NEW YORK EYE AND EAR INFIRMARY OF MOUNT SINAI

James C. Tsai, MD, MBA
President, New York Eye and Ear
Infirmary of Mount Sinai

www.nyee.edu
212-979-4000

MOUNT SINAI CRYSTAL PARTY PAST CHAIRS

2025

Honoring Dennis S. Charney, MD

Joel and Anne Ehrenkranz
Adam Shapiro and Jana Pasquel de Shapiro

2024

Honoring Kenneth L. Davis, MD

Bonnie M. Davis, MD
Jordanna Davis and Stephen Mott
Daniel and Emily Davis

2023

Dina Powell McCormick
and David McCormick

2022

Kenneth L. Davis, MD
Margaret A. Pastuszko, MBA
Dean Dennis S. Charney, MD

Richard A. Friedman
James S. Tisch

2021

Kenneth L. Davis, MD
Dean Dennis S. Charney, MD

Richard A. Friedman
James S. Tisch

2020

Susan and Joe Plumeri

2019

Honoring Peter W. May

Leni May
Leslie Ma Blauner and Andrew Blauner
Juliana and Jon May

2018

Vanessa and Henry Cornell

2017

Zibby Schwarzman and Kyle Owens

2016

Debbie and Glenn August

2015

Joan R. and Joel I. Picket

2014

Hillary Lane Hochberg and Steve Hochberg
Jennifer and Marc Lipschultz

2013

Sarah and Eric Lane

2012

Christine Hikawa and David Windreich

2011

Lisa and Jeff T. Blau

2010

Leni and Peter W. May

MOUNT SINAI CRYSTAL BALL PAST CHAIRS

2009

Stacey and Eric Mindich

2008

Elissa Gretz Friedman, MD
and Robert Friedman

2007

Bonnie M. Davis, MD
and Kenneth L. Davis, MD

2006

Susan P. and Richard A. Friedman

2005

Louise and Edgar Cullman
Elissa F. and Edgar M. Cullman, Jr.
Susan R. Cullman and John J. Kirby, Jr.

2004

Cheryl and Michael Minikes

2003

Georgia and Donald J. Gogel
Leni and Peter W. May

2002

Kathy and Richard Fuld, Jr.

2001

Katherine and Clifford H. Goldsmith
Aerin and Eric Zinterhofer

2000

Betty and John Levin

1999

Diane A. and Blaine V. Fogg

1998

Diane A. and Blaine V. Fogg

1997

Perri Peltz Ruttenberg

1996

Perri Peltz Ruttenberg

1995

Ellen Philips Schwarzman

1994

Frederick A. Klingenstein
and Ellen Philips Schwarzman

1993

Frederick A. Klingenstein
and Ellen Philips Schwarzman

1992

Frederick A. Klingenstein
and Ellen Philips Schwarzman

1991

Frederick A. Klingenstein
and Ellen Philips Schwarzman

1990

Honorary Chairmen
Mr. and Mrs. Edgar M. Cullman

1989

Mr. and Mrs. John Bernbach

1988

Mr. and Mrs. Stephen A. Schwarzman

1987

Mr. and Mrs. Stephen A. Schwarzman

1986

Mr. and Mrs. Stephen A. Schwarzman
Mr. and Mrs. James W. Crystal

TONIGHT'S MENU

FIRST COURSE

Heirloom Tomato and Watermelon Salad (vt & gf)

*Feta, Cheese Mousse, Sherry Gastrique,
Chickpea Sunflower Flatbread, Ginger Apricot Chutney*

MAIN COURSE

Porcini Dusted Day Boat Cod (gf)

*Barley Quinoa Risotto, Wild Mushrooms, Leeks,
Asparagus, Enoki Mushrooms, Lemon Truffle Beurre Blanc*

DESSERT

Lemon Espresso Tart (vt)

*Mocha Ganache, Chantilly Cream,
Citrus Lemon Curd, Candied Lemon Wheel*

WINE

Chateau La Graviere Entre-Deux-Mers Sauvignon Blanc, 2024

Maggio Cabernet Sauvignon, 2021

COFFEE & TEA SERVICE

CRYSTAL PARTY, TUESDAY MAY 20, 2025



DIAMOND BENEFACTORS

Susan P. and Richard A. Friedman

Susan and John B. Hess

Merryl and James Tisch

PLATINUM BENEFACTORS

Georgia and Donald J. Gogel

Kitty Patterson and Tom Kempner

Betty and John Levin

Jennifer Prosek

Charlotte and Alejandro Santo Domingo

Sofia and Mike Segal

CRYSTAL BENEFACTORS

Debbie and Glenn August

Kiva and Neil J. Barr

Vanessa and Henry Cornell

Lori and Eric Friedman

Griffon Corporation

Healthfirst

Leni and Peter May

Stacey and Eric Mindich

Nancy and Daniel Neff

Zibby and Kyle Owens

Pablo Salame

Jana Pasquel de Shapiro and Adam Shapiro

Michael Urfirer and Doni Fordyce-Urfirer

GOLD BENEFACTORS

Marilyn Friedman and Thomas Block

Sarah Winters, MD, MS and
Brendan G. Carr, MD, MA, MS

Chartis

Compass One Healthcare

Continental Grain Company

Susan R Cullman
Ellie and Edgar Cullman
and the Joseph F Cullman Jr Institute
for Patient Experience

Bonnie M. Davis, MD
and Kenneth L. Davis, MD

Eva Andersson-Dubin, MD and Glenn Dubin

Anne and Joel Ehrenkranz

Beth and Michael Fascitelli

Fried, Frank, Harris, Shriver & Jacobson LLP

Leesa M. Galatz, MD, MBA
and the Leni & Peter W. May
Department of Orthopedic Surgery,
Icahn School of Medicine at Mount Sinai

Gilbane

Suzanne and John Golden

Katherine K. Goldsmith

Greater New York Hospital Association

Heidell, Pittoni, Murphy & Bach, LLP

Tony and Amie James

Jane Martin, PhD and Stuart Z. Katz

André and Michael E. Koester

The Ronald and Jo Carole Lauder Foundation

Janet and Scott Lorin, MD, MBA
President, Mount Sinai Brooklyn

McAloon & Friedman, PC

Cheryl and Michael Minikes

Beth and Joshua Nash

Brooke Garber Neidich and Daniel M. Neidich

Jean and Albert Nerken Foundation

New York Cancer & Blood Specialists

The O'Toole Family Foundation

Lynn and Lewis Pell

Joan and Joel I. Picket

Ingeborg and Ira Rennert

GOLD BENEFACTORS

Ira and Diana Riklis

The Rowan Family

JJR Foundation

Sara and Robert Savage

Shaub, Ahmuty, Citrin & Spratt, LLP

Shields Health Solutions

Bonnie and Tom Strauss

SullivanCotter, Inc.

TD Bank

Laurie M. Tisch

Unitex Healthcare Laundry Services

Valley Health System

VNS Health

Jane and Mark Wilf

Beth and Lenny Wilf

Wilson, Elser, Moskowitz,
Edelman & Dicker, LLP

Barbara and Michael Zimmerman

SILVER BENEFACTORS

Jeffrey Bander, MD and The Mount Sinai
Fuster Heart Hospital at Mount Sinai West

Joshua B. Bederson, MD,
The Leonard I. Malis, MD/Corinne and
Joseph Graber Professor & Chair of Neurosurgery
and the Department of Neurosurgery,
Icahn School of Medicine at Mount Sinai

Deepak L. Bhatt, MD, MPH, MBA and
Mount Sinai Fuster Heart Hospital

Tracy L. Breen, MD
and the staff and leadership of
Mount Sinai Morningside and Mount Sinai West

Department of Emergency Medicine,
Icahn School of Medicine at Mount Sinai

Shelley and Steven Einhorn

Marta Filizola, PhD and
the Graduate School of Biomedical Sciences,
Icahn School of Medicine at Mount Sinai

Evan L. Flatow, MD,
Dean for Clinical Affairs,
Icahn School of Medicine at Mount Sinai
Executive Vice President for Clinical Affairs,
Mount Sinai Health System

Sander Florman, MD and
The Recanati/Miller Transplantation Institute,
Icahn School of Medicine at Mount Sinai

Valentín Fuster, MD, PhD and
Mount Sinai Fuster Heart Hospital

SILVER BENEFACTORS

Alison M. Goate, DPhil and the
Department of Genetics and Genomic Sciences,
Icahn School of Medicine at Mount Sinai

Kimberley Harris and Matthew Miller
in honor of the team at the
Institute for Health Equity Research,
Icahn School of Medicine at Mount Sinai

Joseph Herrera, DO and the Department
of Rehabilitation and Human Performance,
Icahn School of Medicine at Mount Sinai

René S. Kahn, MD, PhD and
the Department of Psychiatry,
Icahn School of Medicine at Mount Sinai

Roopa Kohli-Seth, MD and
the Institute for Critical Care Medicine,
Mount Sinai Health System

Monica Kraft, MD and
the Department of Medicine,
Icahn School of Medicine at Mount Sinai

The Lambert Family

Michael L. Marin, MD and
The Ruth J. & Maxwell Hauser and
Harriet & Arthur H. Aufses, Jr., MD
Department of Surgery,
Icahn School of Medicine at Mount Sinai

Ken Miller & Lybess Sweezy

The Mount Sinai Hospital Administration

Mount Sinai Kravis Children's Hospital and the
Jack and Lucy Clark Department of Pediatrics

Mount Sinai Nursing – Executive Nurse Cabinet

The New Jewish Home

NYC Health+Hospitals | Queens

Charles A. Powell, MD and the Division of
Pulmonary, Critical Care and Sleep Medicine,
Icahn School of Medicine at Mount Sinai

Neil M. Rofsky, MD
and the Department of Diagnostic, Molecular
and Interventional Radiology,
Icahn School of Medicine at Mount Sinai

Adhi Sharma, MD and Mount Sinai South Nassau

Samin K. Sharma, MD and
Mount Sinai Cardiovascular Clinical Institute

Joanne Stone, MD
and the Raquel and Jaime Gilinski
Department of Obstetrics, Gynecology
and Reproductive Science,
Icahn School of Medicine at Mount Sinai

TGI Office Automation

David C. Thomas, MD, MHPE
and the Leni and Peter May
Department of Medical Education,
Icahn School of Medicine at Mount Sinai

TIAA

Anonymous

CRYSTAL SPONSORS

Bobbie Abrams
Bond, Schoeneck & King PLLC
BronxCare Health System
Jennie L. DeScherer
Stacey and Curtis Lane
The Arthur Loeb Foundation
Susan and Morris Mark
Lara and Corey Metz
Denise and Andrew Saul
Jill and Sandy Sirulnick
Venable LLP
Emanuel Westfried
Anonymous

GOLD SPONSORS

Gene Bernstein and Kathleen Walsh
Elizabeth and Matthew Feuer
Elissa Gretz-Friedman, MD and Robert Friedman
J.P. Morgan
Jasmin Moshirpur, MD, Dean Emeritus,
and the Mount Sinai Medical Staff
at NYC Health + Hospitals
Professor, Raquel and Jaime Gilinski Department
of Obstetrics, Gynecology and Reproductive Science,
Icahn School of Medicine at Mount Sinai
Paul E. Schaper
Sheryl and Barry K. Schwartz
Jean S. Sharf
Elise McCabe Thompson and
The Honorable William C. Thompson, Jr.
David E. Wheadon, MD

SILVER SPONSORS

645 Ventures
Stacey and Richard Adelson
Aireactor Systems & Services, Inc.
Diane and Anthony Arnold
Dianne and Frank Aroh
Cauldwell Wingate
Consigli Construction Co., Inc.
E-J Electric Installation Co.
EwingCole
Mrs. Enid Fisher
Cheri and Steve Friedman
Alice and Nathan Gantcher
Garfunkel Wild, P.C.
HKS Architects
Dr. Vanessa and Amaziah Howell
Interstate Mechanical Services, Inc.
Susan Klingenstein
Fay Kozas
KPF 50
MillerKnoll
Chris Mongeluzo, Newmark
Nicholas Pertoso
Lisa and Jonathan M. Pruzan
Marjorie and Stuart A. Ross
Laura and Peter Rothschild
Schwartz Sladkus Reich Greenberg Atlas LLP
Syska Hennessy Group, Inc.
Unity Construction Services, Inc.
Vanderweil Engineers
Laurie & Stephen Vogel

FACULTY/STAFF SUPPORTERS

Kelly Cassano, DO

Jodi Cohen-Ansari

Beth R. Essig, Esq. and Jeffrey L. Braun

David A. Feinberg

Douglas Fredrick, MD

Tania and Ahron Friedberg, MD

Janice Gabrilove, MD

Rosemarie Gagliardi-Rustico, EdDc, MPH, CCRA

Eric M. Genden, MD, MHCM, FACS

Stephen Harvey, CPA, MBA

Ingrid B. Hollinger, MD

Bradley Horak, MD

Paul J. Kenny, PhD and
The Friedman Brain Institute,
Icahn School of Medicine at Mount Sinai

I. Michael Leitman, MD, FACS

Kenneth Long

Jane Maksoud

Jasmin Moshirpur, MD, Dean Emeritus,
and the Mount Sinai Medical Staff
at NYC Health + Hospitals
Professor, Raquel and Jaime Gilinski Department
of Obstetrics, Gynecology and Reproductive Science,
Icahn School of Medicine at Mount Sinai

Eric and Susan Nestler

Beth Oliver, DNP, RN, FAAN and Joseph C. Decutiis

Emma Palmer

Constance and Ramon Parsons, MD, PhD

Luis M. Isola, MD and Margaret A. Pastuszko, MBA

Scott M. Pittman

Loida Ramos

David L. Reich, MD and Keith L. Marran, Jr.

Kenneth E. Rosenzweig, MD

Scott J. Russo, PhD

Robert Todd Rustico, MBA

Lorrie and Stephen D. Savas

Robert “Red” Schiller, MD, and
the Institute for Family Health

Kimberly R. Smith

Andrew F. Stewart, MD

Lisa S. Stump

Kaley Joyes, PhD and Filip K. Swirski, PhD

Tracey and James C. Tsai, MD, MBA

Rachel Vreeman, MD, MS and Stephen Best

George Wanna, MD, MHCM, FACS

Karen A. Wish

Stephanie Wisnicki, EdD and H. Jay Wisnicki, MD

Mone Zaidi, MD, PhD
and the Institute for Translational Medicine
and Pharmacology,
Icahn School of Medicine at Mount Sinai

List as of May 22, 2026

SPECIAL THANKS

B2 Prompting, Inc.
Broadway Party Rentals
Patricia Burmicky Photography
Peter Cunningham Design
DJ Dan Nelson
Fly On The Wall Productions
ibidmobile.net
Arlen Hollis Kane
John Ferris, Kern Design
KVL Audio Visual Services
Steve Meyer Productions, Inc.
Mount Sinai Marketing and Communications
Mount Sinai Health System Security Department
Pier Sixty
Pleasant View Printing & Graphics
RDS Delivery Service
RTO Group Ltd.
SP+ Transportation
Truephonic, LLC
Winick Productions LLC

... and all our wonderful volunteers

Denise Dilley, Thomas Harmon, Brian Hoeflschweiger, Anna Horton,
Christian Iezzi, Kavita Kallu, Jacqueline Mark, Natasha McCabe,
Ryan Milan, Nora Nasif Rahaim, David Ramos, and Michelle Rufo

OFFICE OF SPECIAL EVENTS

Allison Hagemann
Melanie Barton Wunsch
Cathy Diaz
Lisa Gonzalez
Jacque Smith
Elena Walker



THANK YOU FOR YOUR SUPPORT

POP,

We are so proud of your
achievements as Co-Chairman of the
Mount Sinai Boards of Trustees
from 2019-2026.

We Love You So Much,

SUSAN, JACKIE, JOSH, BEN, ERICA,
JAMES, SPENCER, GRANT AND SCARLETT

With sincere appreciation to
James Tisch and Richard Friedman
for your extraordinary service and steady
leadership as co-chairmen.

Your insight, perseverance and
care have strengthened the
Mount Sinai Health System and
established a strong foundation for
continued excellence and growth.

Thank you for your dedication and
commitment. Your love for Mount Sinai
is an inspiration to us all.

SUSAN AND JOHN HESS

To the entire community of the
Mount Sinai Health System:

Bless you and thank you.
Thank you for your intellect,
your compassion, and your dedication
to the standard of excellence that the
name 'Mount Sinai' represents.
I am honored, not only tonight, but
every day, to be in your company,
to be of service alongside you.


JAMES S. TISCH



We congratulate Rich Friedman and Jim Tisch
on their remarkable commitment and
leadership through challenging times
to position Mount Sinai at the forefront of
medical education, research, and clinical care.

We, as well as physicians, patients, staff,
management, students, and trustees
are deeply grateful.

GEORGIA AND
DON GOGEL



We express our profound appreciation to past Boards of Trustees Co-Chairs Richard A. Friedman and James S. Tisch for their unwavering devotion and enduring support of the Mount Sinai Health System.

We are deeply grateful for their vision, dedication, and lasting contributions to Mount Sinai and the communities it serves.

KITTY PATTERSON
AND TOM KEMPNER



Congratulations to Richard A. Friedman and James S. Tisch. We are all honored to celebrate your commitment and service to the Mount Sinai Health System.

– Jennifer Prosek





We are proud to support the
41st annual Crystal Party
and extend our sincere thanks to
Boards of Trustees Co-Chairs
Richard A. Friedman and James S. Tisch
for their unwavering leadership of the
Mount Sinai Health System,
whose strategic guidance, stewardship,
and enduring commitment have
helped advance the institution's
mission in patient care,
research, and medical education.

CHARLOTTE AND ALEJANDRO
SANTO DOMINGO



With utmost respect and admiration for
Jim Tisch, for your leadership in business,
philanthropy, and tireless efforts on behalf
of the Mount Sinai Health System.

SOFIA AND MIKE SEGAL

Congratulations to
Rich Friedman and Jim Tisch.

Thanks to both of you for your
extraordinary leadership, commitment and
philanthropy as Co-Chairmen of
the Mount Sinai Boards of Trustees.
We are all grateful.

DEBBIE AND GLENN AUGUST

We salute the leadership of
Richard Friedman and James Tisch
and honor their enduring contributions
to the Mount Sinai community.

KIVA AND NEIL J. BARR

VANESSA & HENRY CORNELL

CONGRATULATE

RICH & JIM

AND ARE HONORED TO SUPPORT

**ALL THE HEROES OF THE
MOUNT SINAI
HEALTH SYSTEM**

Richard and James -
cheers to a job well done!

Thank you for your service
and leadership as Co-Chairs of the
Mount Sinai Boards of Trustees.

LORI AND ERIC FRIEDMAN

Thank you

MOUNT SINAI

for your outstanding care
and congratulations to

RICHARD FRIEDMAN AND JAMES TISCH



Healthfirst celebrates

Mount Sinai Health System

We are committed to your success and look forward to our continued collaboration to make a healthy difference in the communities we serve.

We congratulate this year's honorees for their outstanding leadership and service:

Richard A. Friedman and James S. Tisch

All people
deserve healthcare.



Healthfirst is the brand name used for products and services provided by one or more of the Healthfirst group of affiliated companies.

26-5190

A toast to Jim, Richard, John & Brendan!

Their commitment and leadership
make the difference for all
that Mount Sinai does.

BETTY AND JOHN LEVIN

Congratulations, Rich and Jim
on a job exceptionally well done!

Thank you for your leadership
and stewardship as Co-Chairs of the
Mount Sinai Health System.

LENI AND PETER MAY

We are grateful to
Richard A. Friedman and James S. Tisch
for their unwavering leadership of
the Mount Sinai Health System.
Their strategic vision and extraordinary
dedication have made a significant impact on the
institution and the community it serves.

Heartfelt thanks to Dr. Bruce Gelb
and his extraordinary team at the Mindich
Child Health and Development Institute and
the Mindich Center for Pediatric Precision
Medicine for the amazing, life-changing
work they do every day.

STACEY AND ERIC MINDICH

We salute Jim and Richard for
their extraordinary leadership, wisdom
and compassion. We are grateful for
all that you have done for Mount Sinai
and proud to be your friends.

With enormous admiration and love,

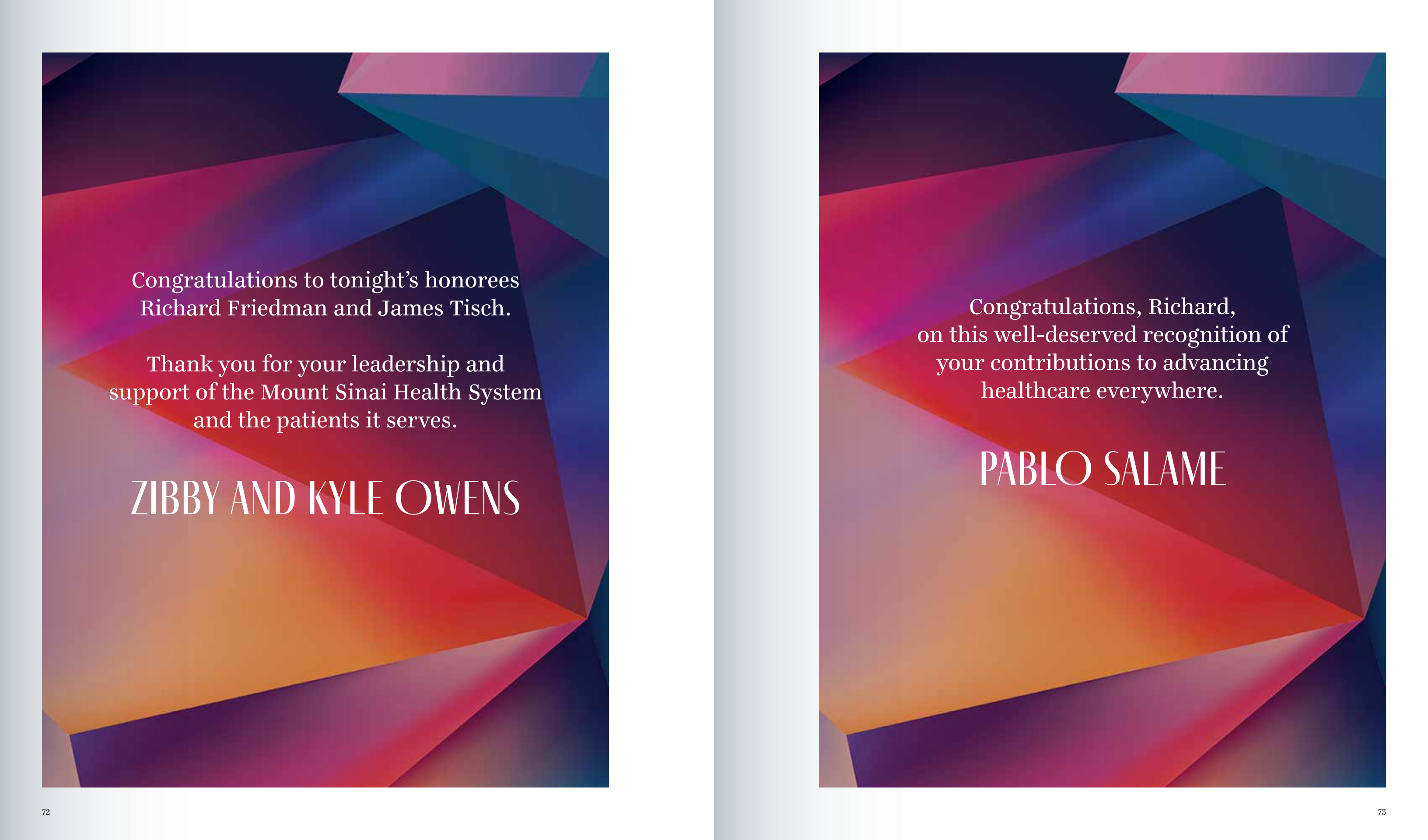
NANCY AND DAN NEFF



Congratulations to tonight's honorees
Richard Friedman and James Tisch.

Thank you for your leadership and
support of the Mount Sinai Health System
and the patients it serves.

ZIBBY AND KYLE OWENS



Congratulations, Richard,
on this well-deserved recognition of
your contributions to advancing
healthcare everywhere.

PABLO SALAME

We are proud to support the
Mount Sinai Health System Crystal Party
and extend our heartfelt thanks to
Board Co-Chairs
Richard Friedman and James Tisch,
for their dedication and commitment to the
Mount Sinai Health System.

JANA PASQUEL DE SHAPIRO
AND ADAM SHAPIRO

We are proud to honor

Richard Friedman and James Tisch

for their endless devotion and extraordinary
leadership as Co-Chairs of the Boards of Trustees
of the Mount Sinai Health System,
The Mount Sinai Hospital and
the Icahn School of Medicine at Mount Sinai
and the outstanding doctors, nurses, faculty,
staff, and management for their tireless
commitment and remarkable achievements.

MICHAEL URFIRER AND
DONI FORDYCE-URFIRER

We know and appreciate the high quality of Mount Sinai Health System doctors, nurses, physical therapists, and staff.

Thank you to honorees
Richard A. Friedman and James S. Tisch
for all you have done for
the Mount Sinai Health System.

MARILYN FRIEDMAN
AND THOMAS BLOCK

Congratulations, Rich and Jim,
on this well-deserved honor.

Thank you for your exceptional leadership as
Co-Chairs of the Mount Sinai Boards of Trustees.

Your vision, dedication, and commitment
have strengthened Mount Sinai and advanced
our mission to serve, discover, and heal.

We are deeply grateful for your partnership
and proud to celebrate your many contributions
to our beloved organization.

With sincere appreciation,

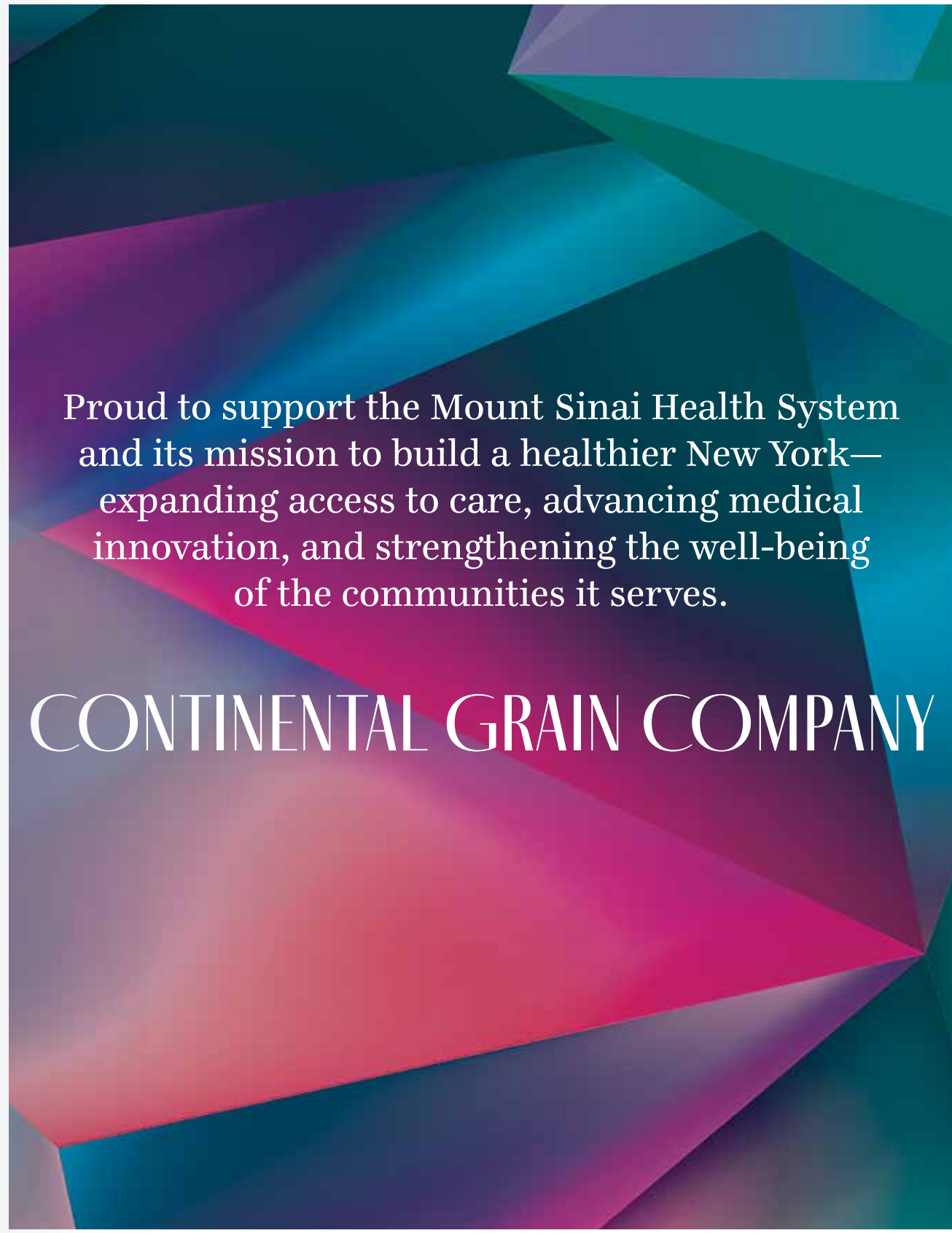
SARAH E. WINTERS, MD, MS, AND
BRENDAN G. CARR, MD, MA, MS



Believe
in *better*



CHARTIS.COM



Proud to support the Mount Sinai Health System and its mission to build a healthier New York—expanding access to care, advancing medical innovation, and strengthening the well-being of the communities it serves.

CONTINENTAL GRAIN COMPANY

The Cullman Family congratulates
Rich Friedman and James Tisch
for their many years of extraordinary service
and visionary leadership as Co-Chairs
of the Mount Sinai Health System.


SUSAN R CULLMAN
ELLIE AND EDGAR CULLMAN
AND THE JOSEPH F CULLMAN JR
INSTITUTE FOR PATIENT EXPERIENCE

We extend our sincere gratitude and
deep admiration to current and past Chairs
of the Mount Sinai Boards of Trustees.

Through their exemplary leadership,
steadfast dedication, and enduring commitment,
they have built a lasting legacy of support
that continues to strengthen and advance the
Mount Sinai Health System's mission of excellence
in patient care, research, and education.


For which we are so grateful,

BONNIE M. DAVIS, MD
AND KENNETH L. DAVIS, MD



Thank you, Rich and Jim
for your inspiration, enduring service,
and steadfast leadership as Co-Chairs of
the Mount Sinai Boards of Trustees
and for making a difference in the
lives of so many.

EVA ANDERSSON-DUBIN, MD
AND GLENN DUBIN



We extend our appreciation to and applaud
Richard A. Friedman and James S. Tisch
for their many years of dedicated service
to the Mount Sinai Health System
and the New York community.

ANNE AND JOEL EHRENKRANZ

A toast to Rich—for his outstanding leadership and many accomplishments at Mount Sinai as Board Co-Chair and beyond.

Your dedication, vision, and impact have strengthened the institution and the communities it serves. Congratulations on a remarkable tenure and all that lies ahead.

BETH AND MICHAEL FASCITELLI

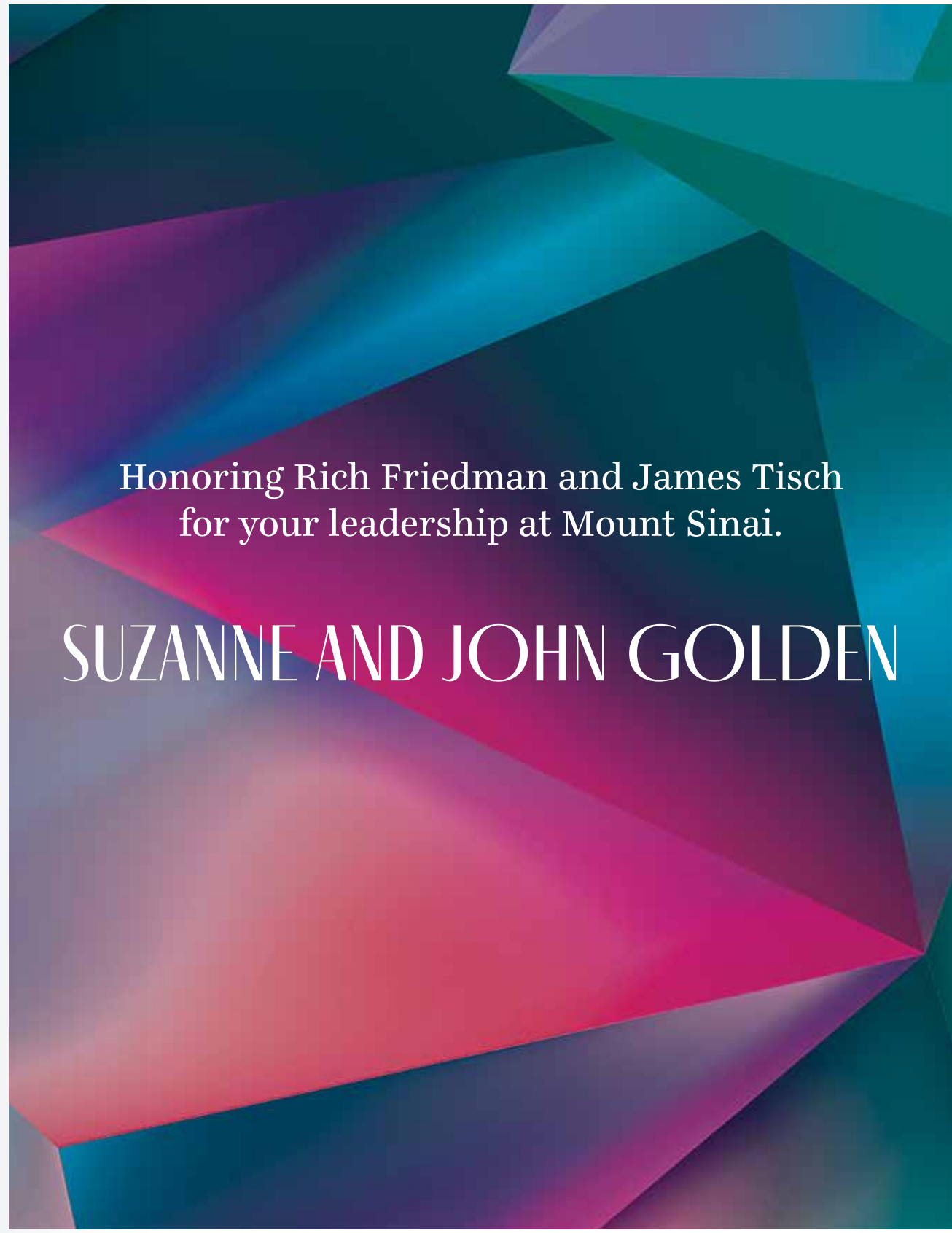
Fried Frank is proud to support *Mount Sinai and joins in honoring Richard A. Friedman and James S. Tisch*

Fried
Frank



**Gilbane is proud to sponsor the
Mount Sinai Health System Crystal Party**

helping to support advanced patient care, develop educational programs, and power research initiatives.

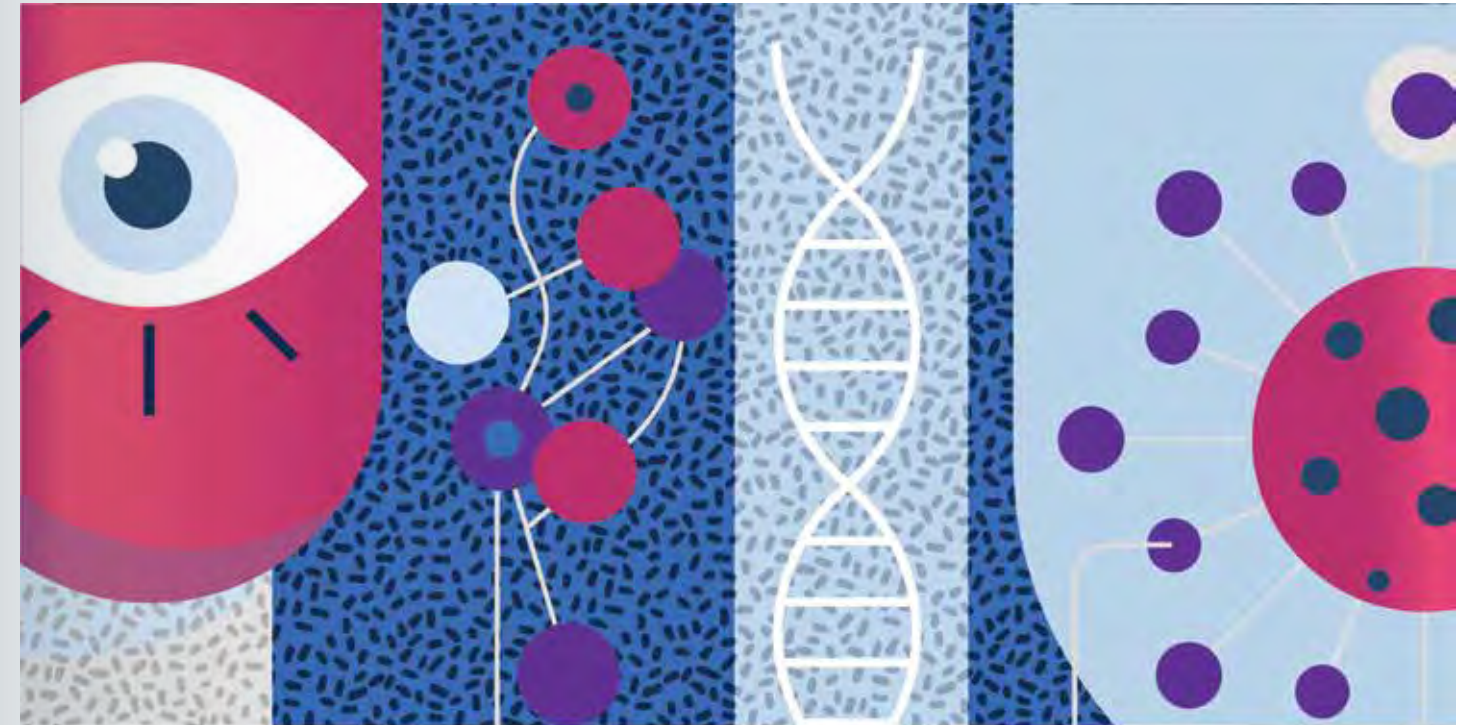


Honoring Rich Friedman and James Tisch
for your leadership at Mount Sinai.

SUZANNE AND JOHN GOLDEN

With thanks to
Richard A. Friedman and James S. Tisch
for their continued support of
the Mount Sinai Health System and
their leadership as Co-Chairs of the Boards of Trustees.

KATHERINE K. GOLDSMITH



In honor of our friend and leader,
Brendan Carr, MD, and our many
friends in the Mount Sinai family.



Proud Supporter of the

Mount Sinai Health System

Congratulations to this year's honorees

RICHARD A. FRIEDMAN & JAMES S. TISCH



HPM&B

HEIDELL, PITTONI, MURPHY & BACH, LLP

Visit us at
hpmb.com

Heartfelt thanks to
Rich Friedman and Jimmy Tisch
for their outstanding leadership.

TONY AND AMIE JAMES

Thank you, Mount Sinai, for your continuing work on long COVID, your expertise with The Entertainment Community Fund's Samuel J. Friedman Health Center, and your support of our PSON graduates!

RUTH NERKEN

We are proud to support our dear friend Richard Friedman and applaud his many contributions to Mount Sinai and to the health and well-being of the New York City community.

**MIKE, TOM, LAURIE, DAVID,
ADRIAN, BRAD, NICOLE,
SCOTT, KEN, PHIL, ANDY AND
YOUR FRIENDS FROM PIA**

We congratulate our friends
Richard Friedman and James Tisch
on their outstanding service as Co-Chairs
of the Mount Sinai Health System.

Their remarkable leadership has
strengthened the institution and positioned
it for continued success.

JANE MARTIN, PhD
AND STUART Z. KATZ

McALOON & FRIEDMAN, P.C.


Is proud to support the 41st Crystal Party
and to congratulate this year's honorees,

RICHARD FRIEDMAN

and

JAMES TISCH

for their steadfast commitment to the
Mount Sinai Health System.

 **McALOON &
FRIEDMAN, PC** One State Street Plaza • New York, New York 10004 • 212-732-8700

We thank and congratulate this year's
Crystal Party honorees,
Rich Friedman and Jim Tisch,
for their exceptional leadership as Co-Chairmen
of the Boards of Trustees at Mount Sinai.

Your dedication and vision have made a
lasting impact on the health and well-being
of New Yorkers for generations to come.

CHERYL AND MICHAEL MINIKES

We are deeply grateful to
Richard A. Friedman and James S. Tisch
for their leadership as Chairs of the
Boards of Trustees of the
Mount Sinai Health System.

Their dedication, thoughtfulness,
and genuine commitment to Mount Sinai's
mission has had a lasting impact
on our institution and the people it serves.
We thank them for the care, vision, and
leadership they have brought to this role.

BETH AND JOSHUA NASH

We congratulate our friends
Rich Friedman and Jimmy Tisch.
You show us what extraordinary
leadership can accomplish.

**BROOKE GARBER NEIDICH
AND DANIEL M. NEIDICH**



NEW YORK CANCER & BLOOD SPECIALISTS

Conquering Cancer Together™



New York Cancer & Blood Specialists

Proudly Supports

The Mount Sinai Health System
41th Annual Crystal Party

Honoring **Richard A. Friedman and James S. Tisch**

for their many years of dedicated service and outstanding leadership
as members and Co-Chairmen of the Boards of Trustees.

1-833-CANCER9 | nycancer.com

Thank you to tonight's honorees
Richard Friedman and James Tisch
for all you have done for Mount Sinai
and the health and well-being
of all New Yorkers.

With enduring gratitude,

LYNN AND LEWIS PELL

We are pleased and honored to support the
extraordinary people, research, and patient care
at the Mount Sinai Health System.

A special thank you to tonight's honorees
Richard Friedman and James Tisch
for their leadership and service to the
Mount Sinai Health System.

JOAN AND JOEL I. PICKET

Proud to support the
Mount Sinai Health System.

INGEBORG AND IRA LEON RENNERT

ARI AND ERYNNE RENNERT

NINA AND MITCH DAVIDSON

TAMMY AND RANDY WINN

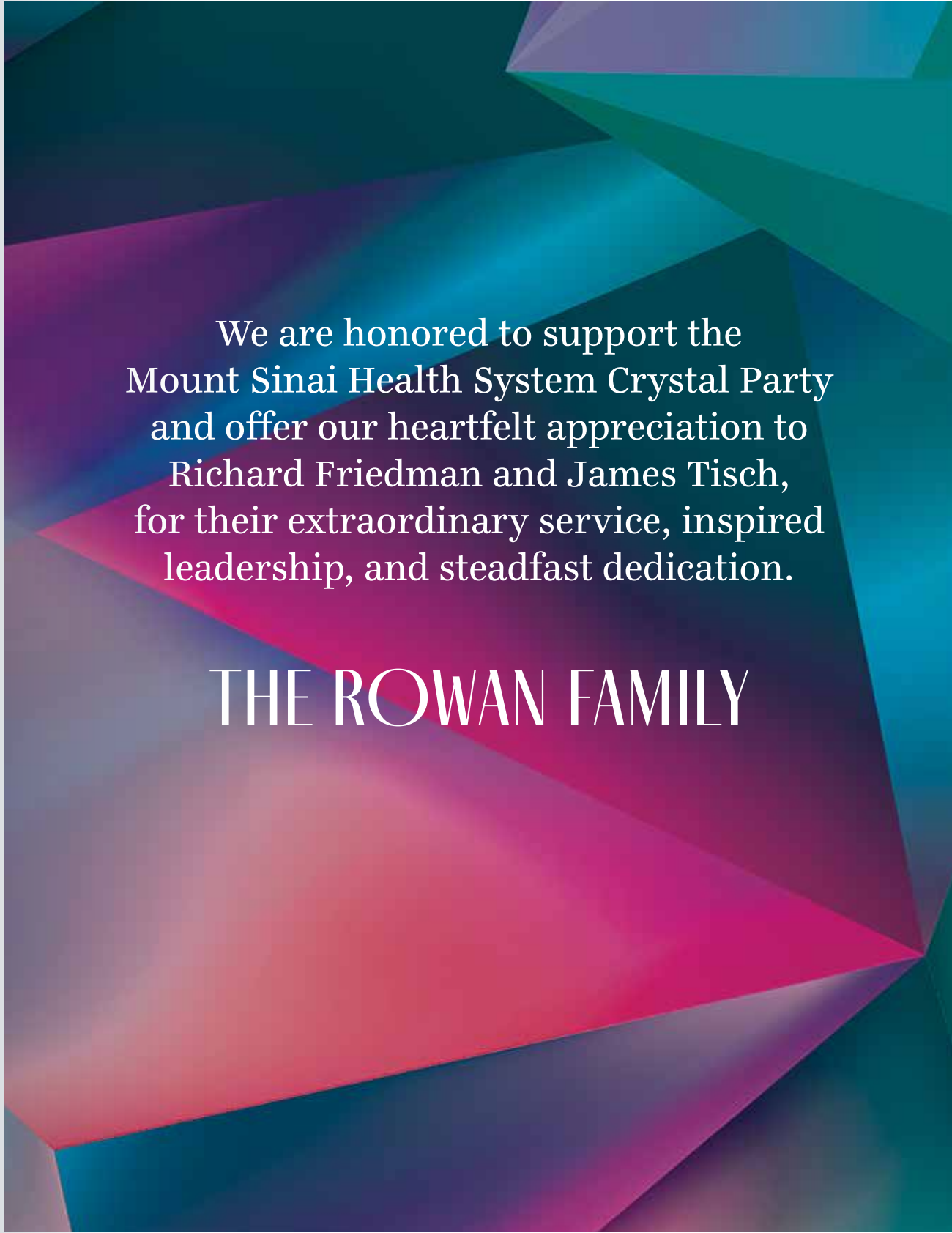
Ira & Diana Riklis
are happy to add our voices to
the choir singing the praises of

JIMMY TISCH

and his partner in life and philanthropy

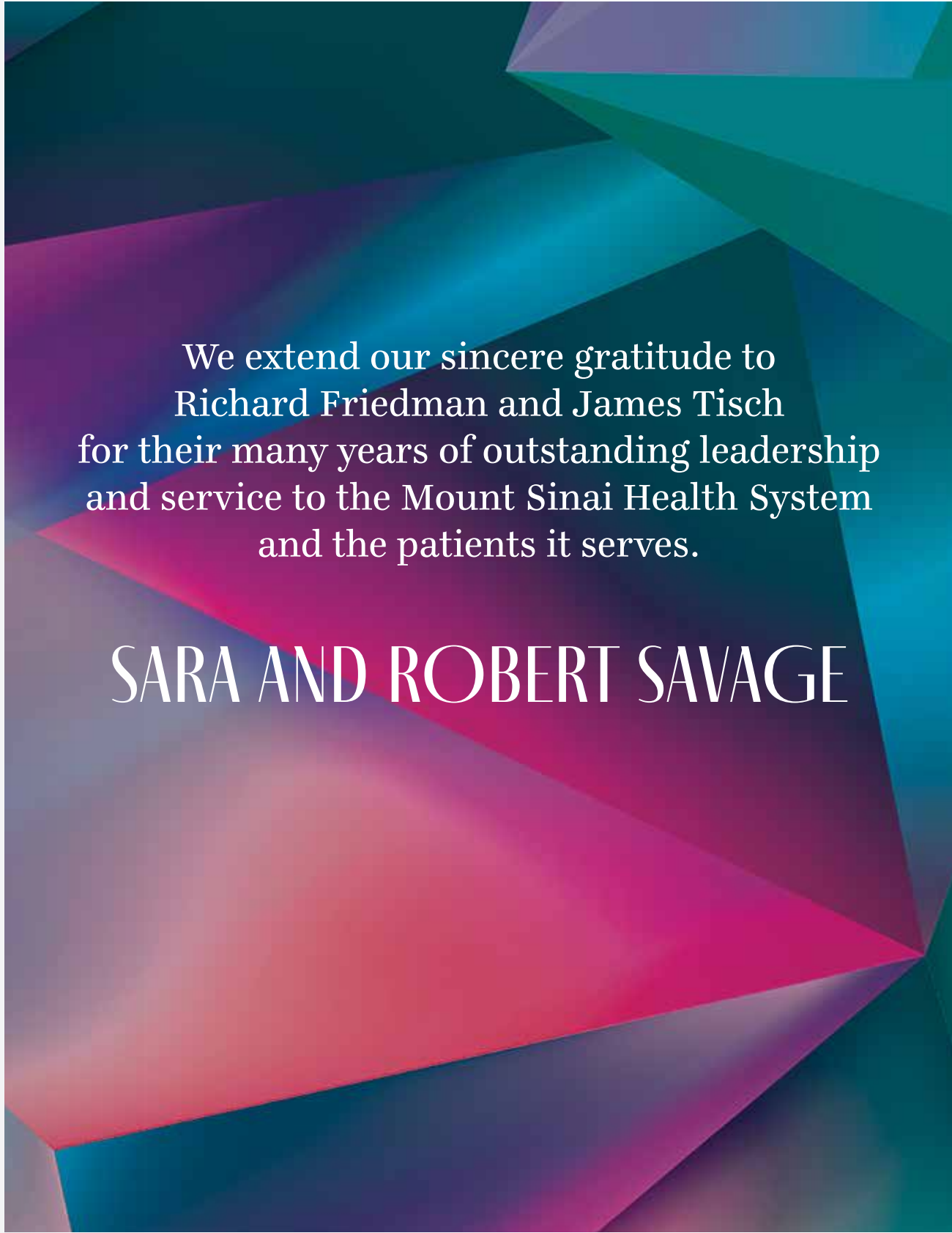
MERRYL TISCH

Truly no honor has been
more merited or justly bestowed.



We are honored to support the Mount Sinai Health System Crystal Party and offer our heartfelt appreciation to Richard Friedman and James Tisch, for their extraordinary service, inspired leadership, and steadfast dedication.

THE ROWAN FAMILY



We extend our sincere gratitude to Richard Friedman and James Tisch for their many years of outstanding leadership and service to the Mount Sinai Health System and the patients it serves.

SARA AND ROBERT SAVAGE

SHAUB AHMUTY
CITRIN & SPRATT


We join Mount Sinai
Health System in honoring

Richard A. Friedman

and


James S. Tisch

Co-Chairs of the Mount Sinai
Boards of Trustees



ELEVATING
Specialty Pharmacy

ELEVATE PERFORMANCE
WHERE IT MATTERS MOST
with Shields — the premier specialty
pharmacy accelerator in the country.



SHIELDSRX.COM

Congratulations to
Richard A. Friedman and James S. Tisch,
whose dedicated leadership as
Co-Chairmen of the Boards of Trustees
has advanced Mount Sinai's most
transformative initiatives.

Their extraordinary service and
generosity will leave a lasting
impact for years to come.

BONNIE AND TOM STRAUSS

SullivanCotter is proud to support the 2026 Mount Sinai Health System Crystal Party

SullivanCotter partners with health care and mission-driven organizations to assess workforce performance, improve organizational structure, align compensation and rewards, and accelerate sustainable performance.



We combine workforce intelligence and advisory expertise to align strategy with execution.

-  **Assess Your Workforce**
Sophisticated analytics and actionable insights to help you evaluate your organization's size, structure, cost, and performance.
-  **Align Compensation & Rewards**
Industry insight, benchmarking data, and tailored consulting to help organizations build competitive pay structures that balance workforce needs with financial imperatives.
-  **Improve Your Workforce Structure**
Dynamic and scalable solutions for organizational design, operating models, and workforce structures that drive strategy and performance.
-  **Accelerate Workforce & Organizational Performance**
Data-driven benchmarking and expert guidance to improve team performance, support leadership development, and accelerate change.

Strategic Workforce Insights for:

- Executives
- Physicians
- Advanced Practice Providers
- Nurses
- Employees
- Boards



A caring team focused
on your goals

and

a commitment to helping
our communities thrive.

We share these values with honorees
Richard A. Friedman and James S. Tisch and
their unexpectedly human approach to healthcare.

Congratulations on your many years of
exceptional achievements, dedication to
research and contributions to global health.

TD Commercial Banking



Member FDIC. ©2025, TD Bank, N.A. and/or its affiliates. All rights reserved. The TD logo and other TD trademarks are owned by The Toronto-Dominion Bank or its affiliates and are used under license.

Thank you to all at the
Mount Sinai Health System
for your tireless dedication and support
to the health and well-being
of the New York City Community.

Thank you to tonight's honorees
Richard Friedman and James Tisch.
Your exceptional dedication and steadfast
passion have made a lasting impact
on the Health System.

**THE RONALD AND JO CAROLE
LAUDER FOUNDATION**



Credit: Arantxa X. Rodriguez
NYC Health + Hospitals, Arts in Medicine Community Murals Project

**Congratulations to Jim
on this well-deserved recognition.
Thank you for your impactful
leadership and generosity!**

Laurie M. Tisch



Proud to Support the Annual
Mount Sinai Health System Crystal Party

A Clean Start
to Every Day

Reliable 24/7/365 Every morning as the sun rises Unitex is behind the scenes cleaning, preparing, and delivering the linen that helps healthcare professionals provide the best care to their patients: fresh sheets, warm blankets, comfortable gowns, clean towels, and pressed uniforms. We do it proudly because we know our customers are a vital resource to the community.

Unitex—We Care About You and Your Patients.

unitex.com | info@unitex.com | 1-866-UNITEX-9

Valley Health System is
Proud to Partner with the
Mount Sinai Health System.



*Working together, we will advance medicine
on both sides of the Hudson.*



Congratulates

Mount Sinai Health System

We are proud to be your partner in providing quality care.

And we join in honoring:

Richard A. Friedman

James S. Tisch



HOME CARE • PERSONAL CARE • HOSPICE CARE • BEHAVIORAL HEALTH
HEALTH PLANS • CARE MANAGEMENT • COMMUNITY OUTREACH

We are proud to support our dear friends
Susan and Richard Friedman
and to thank them for their many
contributions to the health and well-being
of the New York Community.

JANE AND MARK WILF
BETH AND LENNY WILF

Wilf Family
FOUNDATIONS

Celebrating Those Whose Contributions to Our Community Are Crystal Clear

Wilson Elser is proud to
support the 41st annual
Mount Sinai Health System
Crystal Party.

wilsonelser.com

150 East 42nd Street
New York, NY 10017
44 Offices Nationwide



© 2024 Wilson Elser. All rights reserved. 154-24

Thank you, Rich and Jim!
Your leadership has made a real
difference in these challenging
times and has helped secure
Mount Sinai's future.

Barbara and Michael Zimmerman

Leesa M. Galatz, MD, MBA

System Chair, and the faculty of the
Leni and Peter W. May Department of Orthopedic Surgery at
the Icahn School of Medicine at Mount Sinai

congratulate

Richard A. Friedman and **James S. Tisch**

on all of their contributions to the
Mount Sinai Health System
and are proud to honor their legacies at the
41st annual Crystal Party.



We honor Rich Friedman and James Tisch
for their extraordinary leadership,
enduring achievements, and exceptional
dedication to Mount Sinai.

JANET AND SCOTT LORIN, MD, MBA
PRESIDENT, MOUNT SINAI BROOKLYN



**Mount
Sinai
Fuster
Heart Hospital**



Dr. Deepak L. Bhatt, MD, MPH, MBA



Dr. Valentin Fuster, MD, PhD

**Dr. Deepak L. Bhatt and Dr. Valentin Fuster
and the team at
Mount Sinai Fuster Heart Hospital
are thrilled to celebrate the
41st Annual Mount Sinai Crystal Party
Honoring Richard A. Friedman and James S. Tisch**

COMMITTED TO CARE.
COMMITTED TO COMMUNITY.

Compass Healthcare proudly sponsors the 41st annual Crystal Party in support of the Mount Sinai Health System. As a purpose-driven healthcare partner, we empower health systems with specialized services that elevate the patient and caregiver experience.

Together, we're creating meaningful impact where care and community connect.



compass-healthcare.com



To all of Mount Sinai:
Thank you so much for your
commitment to the community.

Congratulations and sincere thanks to
Richard A. Friedman and James S. Tisch
for leading the charge and guiding
Mount Sinai with vision and dedication.

SHELLEY AND STEVEN EINHORN

Thank you to tonight's honorees
Richard Friedman and James Tisch
for all they have done for Mount Sinai!

**KIMBERLEY HARRIS
AND MATTHEW MILLER**

in honor of the team at the
Institute for Health Equity Research,
Icahn School of Medicine at Mount Sinai

Proud to support the Institute for
Health Equity Research and its mission to
advance health equity through community
partnership and innovative solutions

We congratulate Jim Tisch
on his many accomplishments as Co-Chair
of the Mount Sinai Boards of Trustees
and are honored to celebrate him at
tonight's Crystal Party.

KEN MILLER AND
LYBESS SWEEZY



Congratulations & Thank You
Richard A. Friedman
and
James S. Tisch
for your groundbreaking leadership

We are honored to continue our longstanding partnership
with Mount Sinai Health System that began in 1852.

*The New Jewish Home is a comprehensive, mission-driven
health care system serving older adults since 1848.*

JEWISHHOME.ORG • INFO@JEWISHHOME.ORG • 800.544.0304

SHORT-STAY REHAB

CARE AT HOME

ADULT DAY HEALTH CARE

LONG-TERM CARE

HOUSING



NYC
HEALTH+
HOSPITALS

Queens

Care for NYC. No Exceptions.



Mount
Sinai

NYC Health + Hospitals | Queens is Proud to be
an Affiliate of the Mount Sinai Health System

82-68 164th Street, Jamaica, NY 11432

Tel: (718) 883-3000



TGI

OFFICE AUTOMATION

TGI Office Automation is proud to support the Mount Sinai Health System Crystal Party.
Congratulations to this year's honorees, Richard Friedman and James Tisch

Leading the Industry, One Customer at a Time.

For over six decades, the people at TGI have set the industry standard for customer service. From copiers and supplies to document and mailroom management, our solutions are designed to help businesses flow more efficiently.

At TGI, we still believe in the very same founding principle we started with over five decades ago;
a satisfied customer is our most important asset.

WORKPLACE TECHNOLOGY • DOCUMENT SOLUTIONS • IT SERVICES
866.GO.TGIOA • WWW.TGIOA.COM



Their challenges never stop.

Neither should their retirement income.

With over 100 years of financial expertise, TIAA can help you provide your employees a confident path to retirement.

tiaa.org/Healthcare

TIAA would like to congratulate this year's honorees, **Richard Friedman** and **James Tisch**, Co-Chairs of the Mount Sinai Boards of Trustees.

We are grateful to call Mount Sinai a client since 1919, and look forward to our continued relationship for many years to come.

Any guarantees under annuities by TIAA are subject to TIAA's claims-paying ability. TIAA-CREF Individual & Institutional Services, LLC, Member FINRA, distributes securities products. Annuity contracts and certificates are issued by Teachers Insurance and Annuity Association of America (TIAA) and College Retirement Equities Fund (CREF), New York, NY. Each is solely responsible for its own financial condition and contractual obligations.

©2026 Teachers Insurance and Annuity Association of America-College Retirement Equities Fund, New York, NY

5347407 | 4354676 | 04 2026



Thank you, to Boards of Trustees Co-Chairs Richard Friedman and James Tisch for your many years of leadership and guidance at Mount Sinai.

Your commitment has positioned the institution for continued strength and success in the years ahead.

JEFFREY BANDER, MD
AND THE
MOUNT SINAI FUSTER HEART HOSPITAL
AT MOUNT SINAI WEST



Congratulations to Richard A. Friedman and James S. Tisch

on your recognition at the 41st annual Crystal Party and heartfelt thanks for all you have achieved for the Mount Sinai Health System.

With sincere appreciation,
Tracy L. Breen, MD,
 and the staff and leadership
 of Mount Sinai Morningside
 and Mount Sinai West



The Department of Neurosurgery at Mount Sinai Health System

We thank all of the dedicated physicians, clinical staff, and administrators of the Mount Sinai Health System who continue to provide superlative medical care to the patients we serve.

Administrative Leadership

Joshua B. Bederson, MD
 The Leonard I. Malis, MD/Corinne and Joseph Graber Professor & System Chair

Raj K. Shrivastava, MD
 Professor & Vice Chair
 Education

Isabelle M. Germano, MD, MBA
 The Kalmon D. Post, MD Professor & Vice Chair
 Faculty Affairs

Saadi Ghatan, MD
 Professor & Site Chair
 Mount Sinai West and
 Mount Sinai Morningside

Ashley L. Friend, MS
 Vice Chair
 Administration

Christopher P. Kellner, MD
 Associate Professor & Director
 Cerebrovascular Center

Site Leadership

Zachary L. Hickman, MD
 Assistant Professor & Director
 NYC Health + Hospitals/Elmhurst

John K. Houten, MD
 Professor & Director
 Mount Sinai South Nassau

Divaldo Camara, MD
 Assistant Professor & Chief
 Mount Sinai Morningside

Professors

Alejandro Berenstein, MD
 Johanna T. Fifi, MD
 Brian H. Kopell, MD
 Helen S. Mayberg, MD
 Kalmon D. Post, MD
 Theodore H. Schwartz, MD
 Hongyan Jenny Zou, MD, PhD

Associate Professors

Tarvir F. Choudhri, MD
 Neha S. Dangayach, MD, MSCR
 Reade A. De Leacy, MD
 Christopher P. Kellner, MD
 Shahram Majidi, MD
 Konstantinos Margetis, MD, PhD
 Fedor E. Panov, MD
 Hazem Shoirah, MD
 Jeremy M. Steinberger, MD
 Raymond L. Yong, MD, MS

Assistant Professors

Hae Young Baang, MD
 Hang S. Byun, MD
 Arianne Boylan, MD
 Fernanda Calvalho Poyraz, MD
 Divaldo Camara, MD
 M. Travis Caton, MD
 Rui Feng, MD, MS
 Daryl Goldman, MD
 Rmneek Kaur, DO
 Gregory Kapinos, MD
 Gabriela Keeton, MD
 Dana Klavansky, MD
 Cippi C. Lay, MD
 John W. Liang, MD
 Stephen P. Miranda, MD, MS
 Peter F. Morgenstern, MD
 Benjamin I. Rapoport, MD, PhD
 Chan Roonprapunt, MD, PhD
 Laura Saigado-Lopez, MD, PhD
 Tomoyoshi Shigematsu, MD, PhD
 Jonathan A. Sisti, MD
 Sedat Ulkatan, MD
 Nirrit Weiss, MD, MBA
 Joseph Yoon, MD, MSc, MAEd

BioDesign Faculty

Turner S. Baker, PhD
 Iden Kurtalis, PhD
 Thomas J. Oxley, MD, PhD

Voluntary Faculty

Marc S. Arginteanu, MD
 Paolo A. Bolognese, MD
 Frank M. Moore, MD
 Jacob Goldberg, MD
 Yakov Gologorsky, MD
 Arthur L. Jenkins III, MD
 Thomas T. Lee, MD
 Omar Syed, MD
 Arien J. Smith, MD
 Alfred Steinberger, MD
 Kevin C. Yao, MD

Administrative Leadership

Jennifer Savitzky Feuerstein, MBA
 Tarvir S. Sahni, MD, MHA
 Danny Horn, RT
 Jillian Beroza

APP System Leadership

Leslie C. Schlachter, PA-C

APP Site & Clinical Leadership

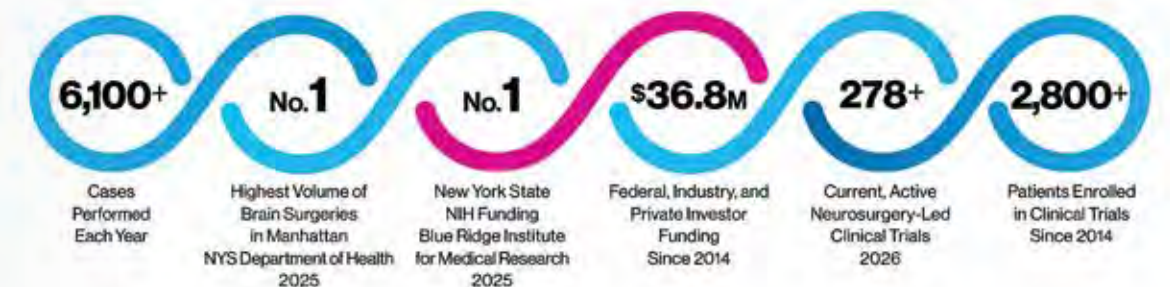
Mei Kuen Suzie Xie, PA-C
 Cindy Melamed, PA-C
 Jamie Aubel, PA-C
 Brian Giovanni, PA-C
 Alexander Heilyar, PA-C

Research Leadership

Sukaina Davdani

Research Faculty

Roland Friedel, PhD
 Michael Katz, MD, PhD
 Ignacio Saez, PhD



Our Team Congratulates

Richard A. Friedman
&
James S. Tisch

Virtual Urgent Care

For common urgent health care needs, see a provider quickly with Virtual Urgent Care. Just start a video visit with the [MyMountSinai](#) app on any smart device.



To learn more, scan the QR code or visit:
mountsinai.org/virtualurgentcare

Para obtener más información, escanee el código QR o visite:
mountsinai.org/virtualurgentcare



Mount Sinai *Respiratory Institute*

Mount Sinai Pulmonary, Critical Care & Sleep Division

Honors with appreciation to this year's honorees
Richard A. Friedman and James S. Tisch

Two Respiratory Institute locations in Manhattan for your convenience

10 East 102nd Street
Fifth Floor
New York, NY 10029

10 Union Square East
Suite 2A
New York, NY 10003

Other Locations in Manhattan

1000 10th Avenue
New York, NY 10019

419 W 114th Street
New York, NY 10025

5 East 98th Street
New York, NY 10029

**TRANSFORMING RESPIRATORY CARE
BREATHE EASIER, NEW YORK**

212-241-5656
@Respiratory_NYC
www.therespiratoryinstitute.org

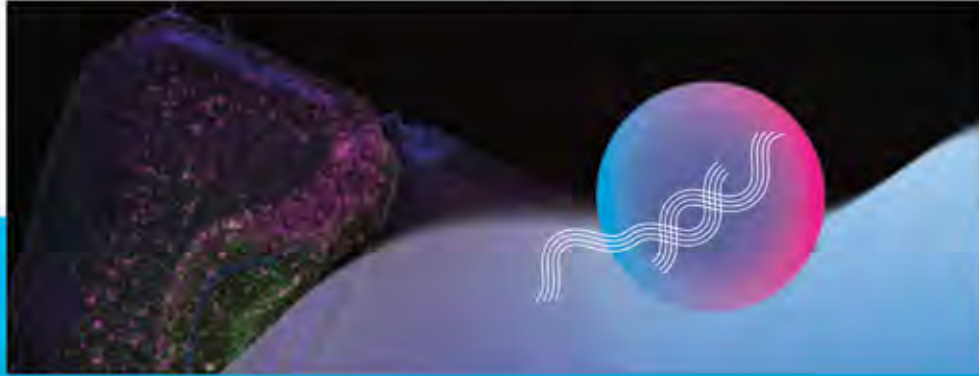
With sincere appreciation to
Richard A. Friedman and James S. Tisch
for their continued support of the
Graduate School of Biomedical Sciences.

In recognition of their distinguished
leadership as Co-Chairs of the Boards of Trustees,
marked by an unwavering commitment
to graduate education, visionary stewardship,
and a transformative impact on
Mount Sinai's educational enterprise.

MARTA FILIZOLA, PhD
AND THE
GRADUATE SCHOOL OF BIOMEDICAL SCIENCES,
ICAHN SCHOOL OF MEDICINE AT MOUNT SINAI

Thank you, Richard Friedman and James Tisch,
for your years of dedicated service to
the Mount Sinai Health System.
We are deeply grateful for your leadership
and for all you have done to advance
the health and well-being of our community.

EVAN L. FLATOW, MD
DEAN FOR CLINICAL AFFAIRS,
ICAHN SCHOOL OF MEDICINE AT MOUNT SINAI
EXECUTIVE VICE PRESIDENT FOR CLINICAL AFFAIRS,
MOUNT SINAI HEALTH SYSTEM



HONORING LEADERSHIP AND LASTING IMPACT

We are proud to join the Mount Sinai community in recognizing **Richard A. Friedman** and **James S. Tisch** for their extraordinary leadership and dedication. Their vision and longstanding commitment to advancing research, innovation, and patient care have helped shape transformative initiatives across Mount Sinai.

We are grateful for their leadership and enduring impact—and for helping to foster an environment where discovery and progress continue to advance the future of medicine.



*The Department of Genetics and Genomic Sciences
Icahn School of Medicine at Mount Sinai*



Department of Rehabilitation and Human Performance “Furthering Ability through Science, Education, and Innovation”

Joseph E. Herrera, DO, FAAPMR
System Chair and Lucy G. Moses Professor

*Megan Andrews, MD
Sarah Bannon, PhD
Sofia Barchuk, MD
Sabrina Breed, PhD
Thomas Bryce, MD
David Cancel, MD
Richard Chang, MD, MPH
Lisanne Cruz, MD
Emily Fatakhov, MD
Lori Garjian, MD
Sal Girardi, MD*

*Ariana Gluck, DO
Michael Harbus, DO
Maria Kajankova, PhD
Soo Kim, MD
Avniel Klein, MD, PhD
Raj Kumar, PhD, MPH
Andrea Leyton-Mange, MD
Rebecca Maitin, DO
Lynda Murray, PhD
Megan Putnam, PhD
Alexandra Pritchett, PhD*

*Malcolm Reid, MD
Angela Riccobono, PhD
Sean Schowalter, MD
Svetlana Serova, PhD
Parag Sheth, MD
Jenna Tosto, DPT
Carley Trentman, MD
Alyssa Volmrich, MD
Eric Watson, PhD
Belinda Yew, PhD
Mariam Zakhary, DO*

Lori McKenna
Vice Chair, Administration

Miguel Escalón, MD
Vice Chair

Melissa Gunning
Senior Director of Rehabilitation

David Putrino, PhD
Director of Rehabilitation Innovation

Adrienne Ormond, PT, DPT
Associate Director

Kristen Dams-O'Connor, PhD
Vice Chair for Research



We are honored to recognize
Richard A. Friedman and
James S. Tisch for their
visionary years of service on the
Boards and dedication to the
Mount Sinai Health System.

René S. Kahn, MD, PhD

Esther and Joseph Klingenstein Professor
Chair, Department of Psychiatry and Behavioral Health System



We are proud to support the
41st Annual Crystal Party
and extend our sincere thanks to
Boards of Trustees Co-Chairs
Richard A. Friedman and James S. Tisch
for their unwavering leadership and
support of the Mount Sinai Health System.

ROOPA KOHLI-SETH, MD

PROFESSOR & SYSTEM DIRECTOR
INSTITUTE FOR CRITICAL CARE MEDICINE
ICAHN SCHOOL OF MEDICINE AT MOUNT SINAI
MOUNT SINAI HEALTH SYSTEM



The Department of Medicine extends its heartfelt appreciation to

Richard A. Friedman and **James S. Tisch**

for their exceptional leadership and extraordinary contributions to the Mount Sinai Health System, and celebrate them at the 41st annual Crystal Party.

Monica Kraft, MD

System Chair, Department of Medicine

Leonard Amoruso, DO

Interim Site Chair
Mount Sinai Downtown

Meena Bansal, MD

Division Chief, Liver Diseases

Deepak L. Bhatt, MD, MPH

Division Chief, Cardiology

Michelle S. Cespedes, MD, MS

Interim Division Chief,
Infectious Diseases

Benjamin K. Chen, MD, PhD

Vice Chair for Research

Brian L. David, MBA

Vice Chair for Clinical Integration
and Administration

Andrew Dunn, MD

Division Chief, Hospital Medicine

Emily Gallagher, MD, PhD

Vice Chair for Clinical and
Translational Research

Radfan Gazali, MD

Site Chair, Mount Sinai Brooklyn

Aaron E. Glatt, MD

Site Chair, Mount Sinai South Nassau

Carol C. Gregorio, PhD

Vice Chair for Strategic Innovation

Cijiang He, MD, PhD

Division Chief, Nephrology

David W. Lam, MD

Vice Chair for Ambulatory Care

Carol Levy, MD

Interim Division Chief, Endocrinology,
Diabetes and Bone Disease

Jenny J. Lin, MD, MPH

Director for Mentoring

Adriana K. Malone, MD

Vice Chair for Education

Rachel Miller, MD

Division Chief, Clinical Immunology
Interim Division Chief, Rheumatology

Mirna Mohanraj, MD

Vice Chair for Strategic
and Community Engagement

Michael Murray, MD

Division Chief, Genomic Medicine

Kathy Navid, MD

Site Chair, Mount Sinai Queens

Charles A. Powell, MD, MBA

Division Chief, Pulmonary,
Critical Care and Sleep Medicine

Beth Raucher, MD

Vice Chair for Quality and Clinical Affairs

Bruce E. Sands, MD, MS

Division Chief, Gastroenterology

Samuel L. Seward, Jr., MD

Site Chair, Mount Sinai Morningside
and Mount Sinai West

Neomi Shah, MD, MPH

Vice Chair for Faculty Affairs
Division Chief,
Data Driven and Digital Medicine

Joseph Sparano, MD

Division Chief, Hematology
and Medical Oncology

Aida Vega, MD

Vice Chair for Primary Care

Juan Wisnivesky, MD, DrPH

Division Chief,
General Internal Medicine



*The Department of Surgery honors
Richard A. Friedman and James S. Tisch in recognition of their
distinguished service and leadership as Co-Chairs of the
Mount Sinai Health System Boards of Trustees.*

*Thank you for your extraordinary commitment, vision,
and support for the Mount Sinai Health System.*

Michael L. Marin, M.D., F.A.C.S.

The Jacobson Professor of Surgery and Chairman,
Department of Surgery Icahn School of Medicine at Mount Sinai
Surgeon-In-Chief, Mount Sinai Health System





Mount Sinai

The leadership of
The Mount Sinai Hospital
congratulates this year's honorees
Richard A. Friedman and James S. Tisch
and thanks them for their service to the
health and well-being of our community.

We thank all of our guests
for their continued and unwavering support of
Mount Sinai Health System.

Congratulations to this year's
honorees

Richard A. Friedman & James S. Tisch!

Thank you for your
commitment to the
Mount Sinai Health System!

From the team at the
Jack and Lucy Clark Department of Pediatrics
and Mount Sinai Kravis Children's Hospital

Lisa M. Satlin, MD

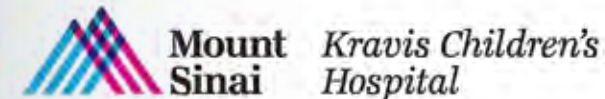
Herbert H. Lehman Professor and System Chair,
Jack and Lucy Clark Department of Pediatrics
Pediatrician-In Chief, Mount Sinai Kravis Children's Hospital

Elizabeth Haines, DO, MSc, FACEP

Chief Operating Officer, Mount Sinai Kravis Children's Hospital
Senior Vice President, Pediatric Services, Mount Sinai Health System

Peter Midulla, MD, FACS, FAAP

Surgeon-in-Chief, Mount Sinai Kravis Children's Hospital



The Mount Sinai Health System Executive Nurse Cabinet

proudly honors

Richard A. Friedman and James S. Tisch.

We extend our heartfelt gratitude to all guests for their unwavering support of Mount Sinai Health System and Mount Sinai Nursing.

Beth Oliver, DNP, RN, FAAN

Wendy O'Brien, BSN, MBA

Dianne Aroh, MS, RN, NEA-BC, FACHE

Esther Pandey, DNP, MS, RN

Fran Cartwright, PhD, RN-BC,
AOCN, FAAN

Margaret Pfeiffer, MSN, NE-BC, CCRN

Lorisa Richards, DNP, RN, FNP, NE-BC

Claudia Garcenot, MSN, MHA, RN

Priscilla Samuel, DNP, FNP-BC, RN

Kimberly S. Glassman, PhD, RN, NEA-BC,
FAONL, FAAN

Jemilat Siju, DNP, MSN, RN,
ANP-BC, OCN

Jill M. Goldstein, RN, MA, MS

Marsha Sinanan, DNP, MBA, MSN,
RN, NEA-BC, CPXP, FAAN

Clair Lunt, DHSc, RN

Maria L. Vezina, EdD, RN,
NEA-BC, FAAN

Jonathan Nover, MBA, RN

Mount Sinai Nurses
Creating Excellence Together



The Recanati/Miller Transplantation Institute

proudly supports
the faculty and staff of
the Mount Sinai Health System.



**Mount
Sinai**

*Recanati/Miller
Transplantation
Institute*

*BEST WISHES FOR CONTINUED SUCCESS TO
THE MOUNT SINAI HEALTH SYSTEM*

FROM

*THE DEPARTMENT OF DIAGNOSTIC, MOLECULAR
AND INTERVENTIONAL RADIOLOGY
ICAHN SCHOOL OF MEDICINE AT MOUNT SINAI*

*Neil M. Rofsky, MD, MHA
Dr. Charles M. and Marilyn Newman Professor
System Chairman*

Senior Associate Dean for Faculty Well-Being and Coaching

Neuroradiology

Amish Doshi, MD
Amit Aggarwal, MD
Shirley Chan, MD
Burton Drayer, MD
Gordon Heller, MD
Nolan Kagetsu, MD
Azita Khorsandi, MD
Daniel Lefton, MD
Mika Lidov, MD
Emma Baker Moss, MD
Thomas Naidich, MD
Brian Rigney, MD
Aryeh Stollman, MD
Manvinder Kumar, MD
Woodley Pean, MD
Stanley Tiu, MD
Mark Finkelstein, MD
Deepak Jain, MD
Alexander Breeser, MD
Bradley Delman, MD
Site Chair, MSH

Interventional

Robert Lookstein, MD
Vivian Bishay, MD
Aaron Fischman, MD
Kirema, Garcia-Reyes, MD
Edward Kim, MD
F. Scott Nowakowski, MD
Rahul Patel, MD
Rajesh Patel, MD
Dan Shilo, MD
Jenanan Vairavamurthy, MD
Brett Marinelli, MD
Shaun Honig, MD
Site Chair, MS Bklyn
Jeffrey Lautin, MD
Site Chair, MSQ

Body Imaging

Bachir Taouli, MD
Barak Friedman, MD
Eric Wilck, MD
Benjamin Bashist, MD
Laura Beitia, MD
Martin Broker, MD

Rona Orentlicher Fine, MD
Deborah Feldman, MD
David Frager, MD
Daniel Meltzer, MD
Manzar Rizvi, MD
Susan Frank, MD
Stuart Golbey, MD
Sharon Gordon, MD
Kathleen Halton, MD
Amita Kamath, MD
Karen Lee, MD
Sara Lewis, MD
Richard Libes, MD
Sherman Lipschitz, MD
Max McLaughlin, MD
Monika Misra, MD
Charles Pfaff, MD
William Simpson, MD
Kathryn Solomon, MD
Richard Stern, MD
Joseph Weissbrot, MD
Michael Yao, MD
Dina Hamdan, MD
Alon Slutzky, MD
Arthi Reddy, MD
Aleksander Krazinski, MD
Eric Fang, MD
Rayane El Rahi, MD
Amine Geahchan, MD
Alexander Kagen
Site Chair, MSW

Pediatrics

Henrietta Rosenberg, MD
Paul Fisher, MD
Philip Lanham, MD
Joy Masseaux, MD
Neil Lester, MD
Netta Blitman, MD
Gauri Tilak, MD
Anita Kermani, MD

**Cardiothoracic
Imaging**

Adam Jacobi, MD
Michael Chung, MD
Martha Gowda, MD
Ali Haneen, MD

Claudia Henschke, MD
David Mendelson, MD
Barbara Zeifer, MD
Marlene Rackson, MD
David Yankelevitz, MD
Jeffrey Zalta, MD
Steven Braha, MD
Barbara Kuang, MD
Hien Pham, MD

Musculoskeletal Imaging

Mingqian Huang, MD
Idoia Corcuera-Solano, MD
Robert Irish, MD
punJhanna Moore, MD
Justin Ngeow, MD
Carrie Tong, MD
Joshua Leeman, MD
Yudell Edelstein, MD

Breast Imaging

Laurie Margolies, MD
Genevieve Abbey, MD
Lisa Abramson, MD
Salomon Bluetreich, MD
Fatima Choudhry, MD
Ilona Cohen, MD
Christine Chen, MD
Alexander Rand, MD
Frimmit Forman, MD
Susan Goldfine, MD
Rayane Issa, MD
Lynn Ladetsky, MD
Katharine Maglione, MD
Emily Sonnenblick, MD
Janet Szabo, MD
Michael Simon, MD
Dayna Williams, MD
Salvador Arceo, MD
Hemal Grover, MD
Arielle Sasson, MD
Eric Storm, MD
Brian Jin, MD
Daniel Janos Savaria, MD

Nuclear Medicine

Randy Yeh, MD

Munir Ghesani, MD
Charles Richard Goldfarb, MD
Karin Knesaurek, PhD
Fukiat Ongseng, MD
Lewen Stempler, MD
Sampanna Rayamajhi, MD
Anthony Hafez, MD
Ahmed Abdelrahman, MD
Omery Bilal, MD

Emergency Radiology

Serge Sicular, MD
Anmol Bansal, MD
Trevor Ellison, MD
Dairon Garcia, MD
Arel Golombek, MD
Ajit Fernandes, MD
Neil Roach, MD
Bruce Saffran, MD
Srinivasu Yermeni, MD
John-Paul Grenier, MD
Hien Pham, MD
Ghadi Abboud, MD
Basit Achakzai, MD
Joseph Song, MD
Steven Sapozhnikov, MD
Benjamin Parnes, MD

Imaging Sciences

Zahi Fayad, PhD
Priti Balchandani, PhD
Octavia Bane, PhD
Lazar Fleysher, PhD
Akbar Alipour, PhD
Jungho Cha, PhD
Ki Sueng Choi, PhD
Xueyan Mei, PhD
Hayit Greenspan, PhD
Yun Soung Kim, PhD
Shams Rashid, PhD
Philip Robson, PhD
Alan Seifert, PhD
Abraham Teunissen, PhD
Mandy van Leent, PhD
Xiang Xu, PhD

Mount Sinai South Nassau proudly supports the 41st annual Mount Sinai Health System Crystal Party

Honoring Richard A. Friedman and James S. Tisch
for their dedicated service to the Mount Sinai Health System.

On behalf of the Advisory Board, Administration, and Medical Staff



WE FIND A WAY



One Healthy Way, Oceanside, NY 11572 • mountsinai.org/southnassau



**Dr. Samin K. Sharma Family Foundation
Cardiac Catheterization Laboratory at
The Mount Sinai Fuster Heart Hospital**



**Is Thrilled to Celebrate the
41st annual Mount Sinai Crystal Party Honoring
BOT Co-Chairs Richard A. Friedman and James S. Tisch**



**1190 Fifth Avenue - GP 1 South
New York, NY 10029
Tel 212-241-4021**

With sincere appreciation to
Richard A. Friedman and James S. Tisch
for their visionary leadership of
the Mount Sinai Health System and
their dedication to strengthening
health care across New York City.

Congratulations to John Hess
on his new leadership role as
Chairman of the Boards of Trustees.

JOANNE STONE, MD

AND THE

**RAQUEL AND JAIME GILINSKI DEPARTMENT
OF OBSTETRICS, GYNECOLOGY
AND REPRODUCTIVE SCIENCE,
ICAHN SCHOOL OF MEDICINE AT MOUNT SINAI**



**Honoring the Legacy of
Richard A. Friedman and James S. Tisch**

The Leni and Peter May Department of Medical Education extends its deepest gratitude for your visionary leadership. Your commitment to innovation and excellence continues to inspire our students, faculty, staff, and the entire Mount Sinai Community



Recognizing Outstanding Leadership in Health Care

We congratulate this year's award recipients for their dedicated service and lasting contributions to **Mount Sinai's** impactful and forward-looking initiatives.

akingump.com

©2026 Akin Gump Strauss Hauer & Feld LLP. All rights reserved.
Attorney advertising. Prior results do not guarantee a similar outcome.

Akin®

In honor of our dear friends

Jimmy Tisch
and
Richard Friedman

We thank you for your many years of dedicated
service to the Mount Sinai Health System
and for your incredible generosity.

Warmly,

JUDY AND RON BARON

Congratulations Rich and Susan—

Your dedication and leadership to the
Mount Sinai Health System have been
extraordinary, leaving an indelible impact
that will endure for years to come.

**KAREN AND JEFFREY FINE
AND FAMILY**

In recognition of
Richard Friedman and James Tisch
for their efforts on behalf of the
Mount Sinai Health System.

Congratulations on your special honor.

MARJORIE AND STEVE FIVERSON
KATHY AND MITCHELL JACOBSON



*With great pride, we celebrate our
dear friend and honoree.*

Richard A. Friedman

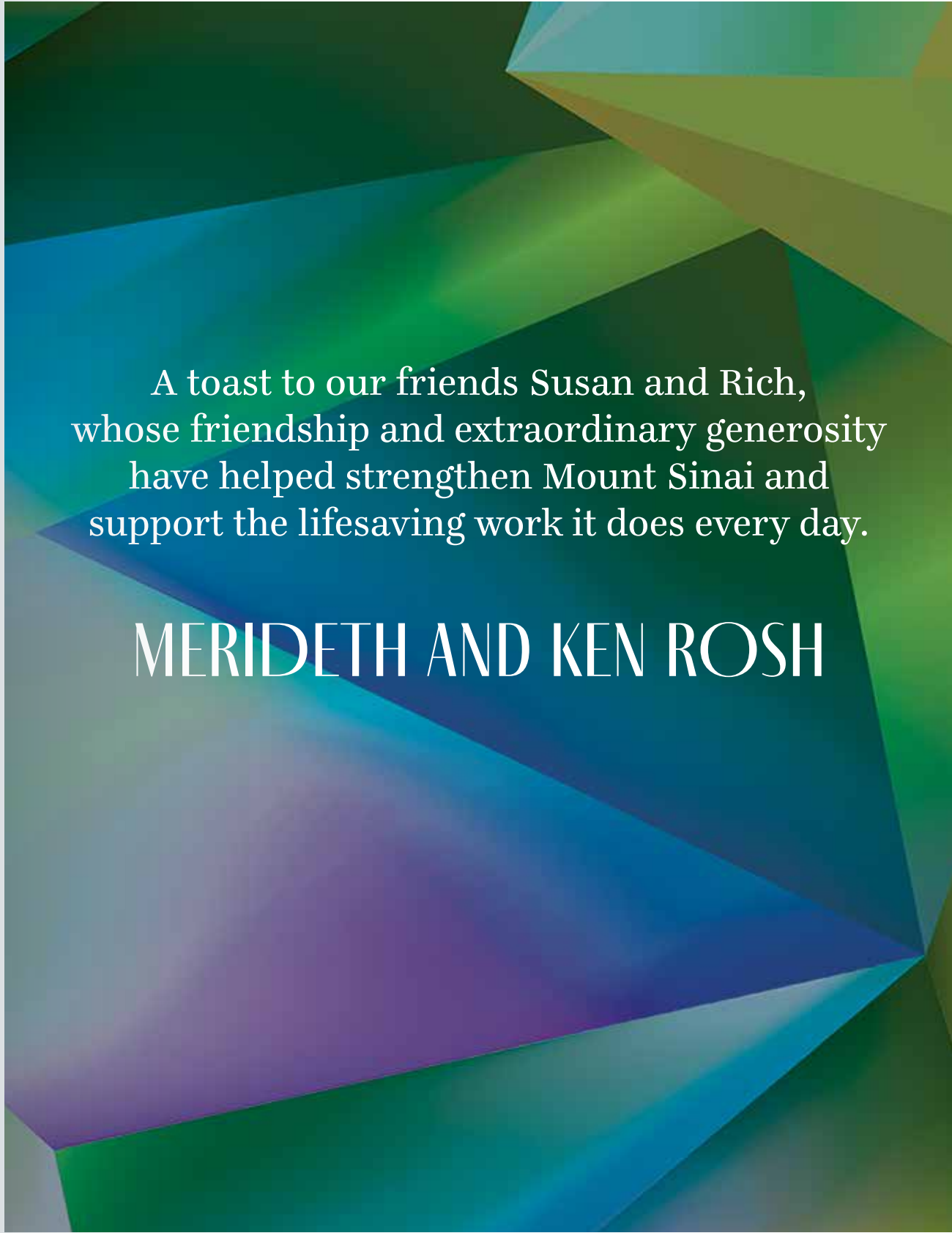
*Your passion, generosity, and
unwavering dedication have
touched so many lives.*

Thank you for all that you do.

Caren & Jack Irushalmi



THE MOUNT SINAI HEALTH SYSTEM
Crystal Party



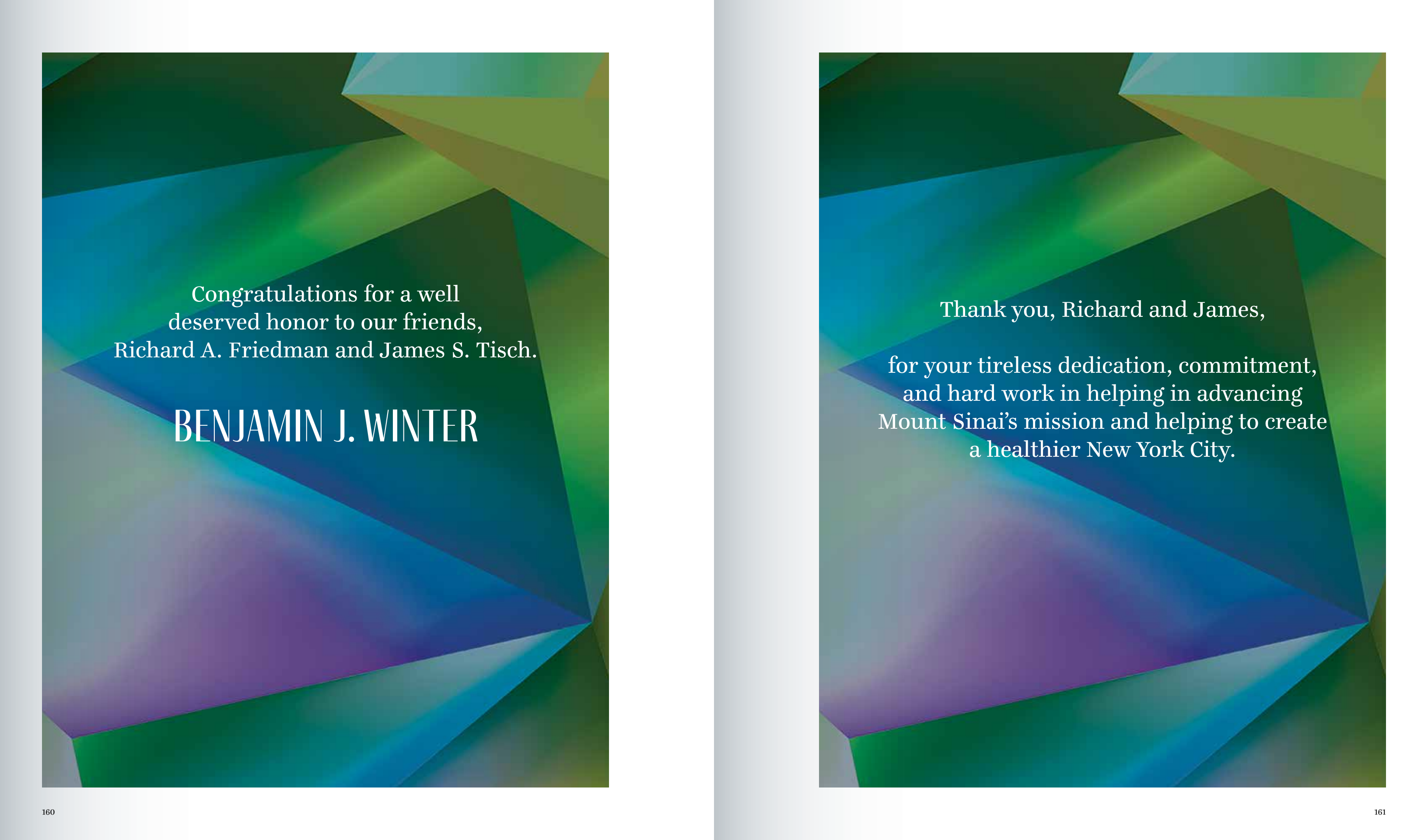
A toast to our friends Susan and Rich,
whose friendship and extraordinary generosity
have helped strengthen Mount Sinai and
support the lifesaving work it does every day.

MERIDETH AND KEN ROSH



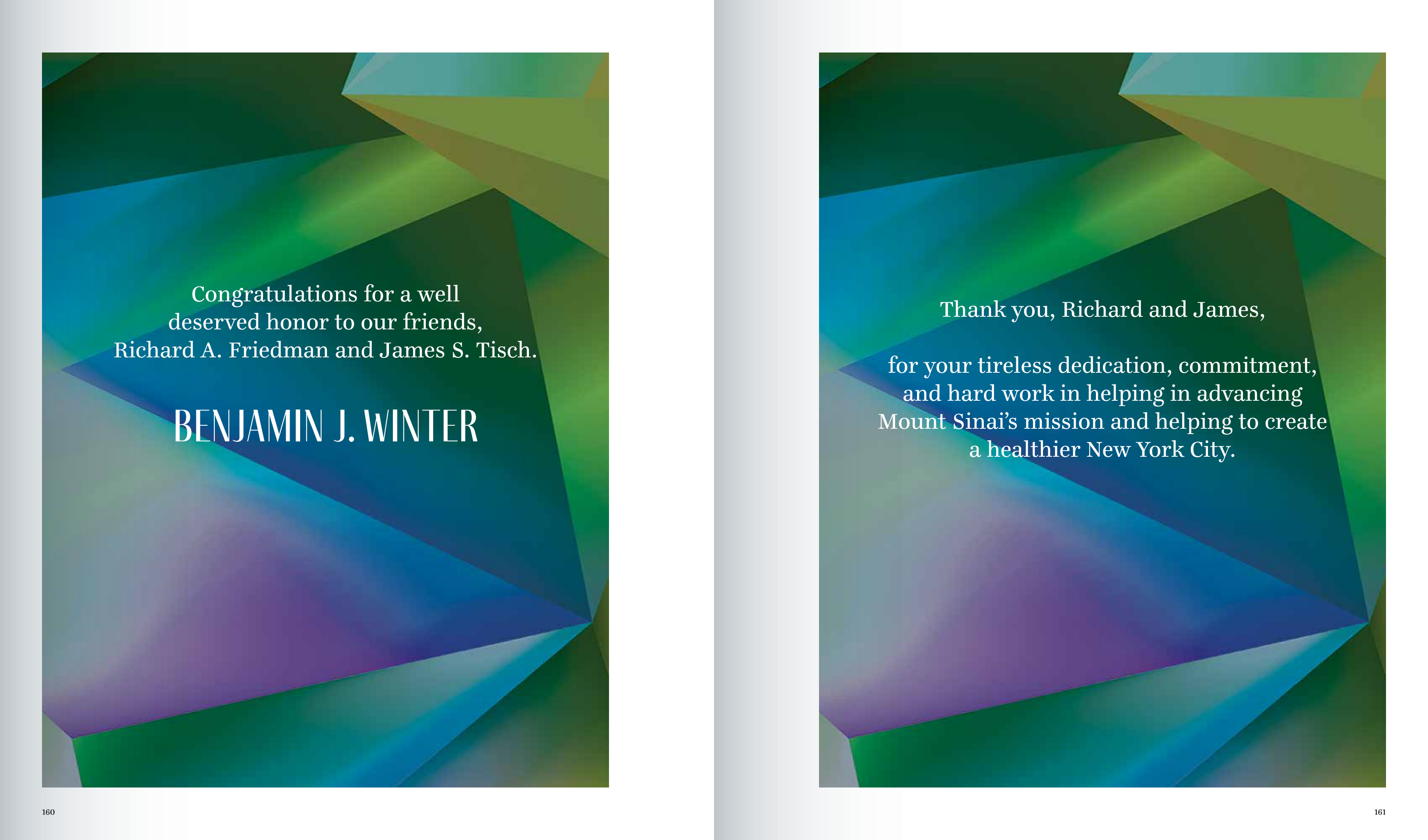
Congratulations Richard and Jim.
A job well done!

DENISE AND ANDREW SAUL



Congratulations for a well
deserved honor to our friends,
Richard A. Friedman and James S. Tisch.

BENJAMIN J. WINTER



Thank you, Richard and James,
for your tireless dedication, commitment,
and hard work in helping in advancing
Mount Sinai's mission and helping to create
a healthier New York City.

Thank You

Rich & Jim

*For your exceptional service
and leadership.*

GAIL AND AL ENGELBERG

Congratulations to
Richard A. Friedman and James S. Tisch,
on their outstanding commitment and
leadership to improving the lives of many,
and to serving as role models of selfless
devotion to our community.

PHYLLIS AND BILL MACK

With Deep Gratitude and Admiration

We are proud to honor
Richard Friedman and James Tisch
for their extraordinary devotion, leadership,
and unwavering commitment to
The Mount Sinai Hospital.

Your dedication has made a profound and lasting
impact on the lives of so many.

Through your vision, generosity, and steadfast support,
you have helped advance excellence in patient care,
groundbreaking research, and compassionate healing.

Your contributions extend far beyond what can be measured—
they are felt in every life touched, every family comforted,
and every future made brighter because of your efforts.

It is with heartfelt appreciation that we recognize
not only what you have given, but the spirit
in which you give – with integrity, kindness, and a
deep sense of responsibility to the community.

**Thank you for your remarkable leadership
and enduring commitment.**

Your work continues to inspire all of us.

With sincere gratitude and warmest regards,

**SONDRA AND
DAVID S. MACK**

**Aaronson Rappaport
Feinstein & Deutsch, LLP
Celebrates
Mount Sinai Health System's
41st annual Crystal Party**

**Congratulations to this year's honorees
Richard A. Friedman
&
James S. Tisch**

**AARONSON RAPPAPORT FEINSTEIN & DEUTSCH, LLP
ATTORNEYS TO THE HEALTHCARE PROFESSION**

**600 THIRD AVENUE
NEW YORK, NY 10016
(212) 593-6700**

**390 OLD COUNTRY ROAD
GARDEN CITY, NY 11530
(516) 281-9600**

www.arfdlaw.com



Bond stands with the **Mount Sinai Health System** and its commitment to bring a full range of high-quality health care close to you, work, home, family and friends.

**Congratulations to this year's Crystal Party Honorees,
Richard A. Friedman and James S. Tisch.**



Daniel F. Murphy, Jr. and Mary Ellen Donnelly

**ALBANY BUFFALO ELMIRA LONG ISLAND NEW YORK CITY ROCHESTER
SARATOGA SPRINGS SYRACUSE UTICA WESTCHESTER**

600 Third Avenue, 22nd Fl, New York, NY 10016 • 646.253.2300 • BSK.COM

We salute our good friends Rich and Jim
for their contribution to Mount Sinai and
in particular as Co-Chairs to the tremendous
success of the Limitless Campaign.

With all good wishes,

RITA AND CHARLES B.

We are proud to support the
Crystal Party and to celebrate
our dear friends Rich and Susan Friedman,
whose extraordinary generosity,
leadership, and dedication have made
a lasting impact on the mission of
the Mount Sinai Health System and
the patients and families it serves.

**ELIZABETH AND
MATTHEW FEUER**

HILDENE
CAPITAL MANAGEMENT

proudly supports



celebrating over 170 years of
exceptional medical care,
scientific innovation and
meaningful community impact

+1 (203) 517-2500

www.hildenecap.com

Jim and Rich,

thank you for your extraordinary
leadership and generosity.

Through two historic campaigns, you helped
inspire transformational philanthropy
for the Mount Sinai Health System —
raising more than \$5 billion and
guiding our community through both the
Great Recession and the COVID-19 pandemic.

Your vision, stewardship, and dedication
have left a lasting impact on Mount Sinai
and the countless lives it serves.

**MARK KOSTEGAN, FAHP,
ROSHMA AZEEM, MPA,
AND THE OFFICE OF PHILANTHROPY,
MOUNT SINAI HEALTH SYSTEM**

Newmark Proudly Supports



as they host their **41st Annual Crystal Party**

IN HONORING

Richard A. Friedman and **James S. Tisch**
and for their continuing research in the medical field

Chris Mongeluzo
EXECUTIVE VICE CHAIRMAN, NEWMARK



NEWMARK

nmrk.com

With admiration and gratitude,
we proudly support the
Mount Sinai Health System
and join in celebrating its unwavering
commitment to exceptional health care,
compassionate patient service, and
groundbreaking advances in medical research.

Mount Sinai's leadership continues
to shape the future of medicine,
and we are honored to recognize
the extraordinary contributions of
Richard A. Friedman and James S. Tisch,
whose vision and dedication strengthen
this vital institution.

**SHERYL AND
BARRY K. SCHWARTZ**

congratulations

*Richard A. Friedman
and
James S. Tisch*



**Mount
Sinai
Hospital**



With gratitude and admiration,

Sharon & Robert Sternheim

A landmark on Manhattan's chic Upper East Side, with an unparalleled selection of everyday essentials and specialty merchandise; iconic beauty and hair products, women's accessories, men's grooming to home goods, toys, electronics, snacks, along with gifts and seasonal items for every occasion.

ZITOMER - 969 MADISON AVENUE, NEW YORK, NY 10021 - 212.737.5560 - zitomer.com

The Friedman Brain Institute

Celebrates the Mount Sinai Health System

41st Annual Crystal Party

With extraordinary generosity, foresight, and commitment, Richard A. Friedman, together with his wife, Susan P. Friedman, laid the foundation for The Friedman Brain Institute and has been a steadfast champion of neuroscience at Mount Sinai. His vision has fueled the growth of world-class preclinical and clinical brain research and strengthened the delivery of transformative neurological and psychiatric care at Mount Sinai. We are deeply grateful to Mr. Friedman for his enduring leadership and profound impact on the future of brain health.



**Icahn
School of
Medicine at
Mount
Sinai**

Artwork by: Candice Chapouly, PhD

Richard Friedman—

We commend your impressive
dedication and leadership.

STACI AND JOHN BARBER

To Rich,

Husband, father, brother,
brother-in-law, and uncle—

We are so proud of you.

Congratulations on an extraordinary run.

Your family



Garfunkel Wild is proud to support

**MOUNT SINAI
HEALTH SYSTEM'S
41ST ANNUAL
CRYSTAL PARTY**

AND CONGRATULATES
THIS YEAR'S HONOREES



One Focus Law Firm: Health Care

New York | New Jersey | Connecticut | Florida | Washington, DC

With gratitude for the leadership of

**Richard A. Friedman
and James S. Tisch**

and the doctors and staff of the

**Mount Sinai
Health System**

who have set new standards in
research and healthcare.

Arne & Milly Glimcher

PACE



Mount Sinai Health System
41st Annual Crystal Party

IR+M proudly toasts the
Mount Sinai Health System
and congratulates this year's honorees
Richard Friedman and James Tisch!

115 FEDERAL STREET, BOSTON, MA 02110
(617) 330-9333 FAX (617) 330-9222
www.incomeresearch.com

Congratulations to
Richard Friedman and James Tisch
for this well-deserved honor!

MARK LEBWOHL, MD

Congratulations to
Richard Friedman and James Tisch
on their leadership, vision, and unwavering
commitment to Mount Sinai.

Love,

PAM AND ED PANTZER

Congratulations to Richard and James
and thanks for your tireless efforts to
the Mount Sinai Health System.

We, like so many New Yorkers,
are the beneficiaries of your good work.

**STEVEN RAPPAPORT
AND JUDITH GARSON**

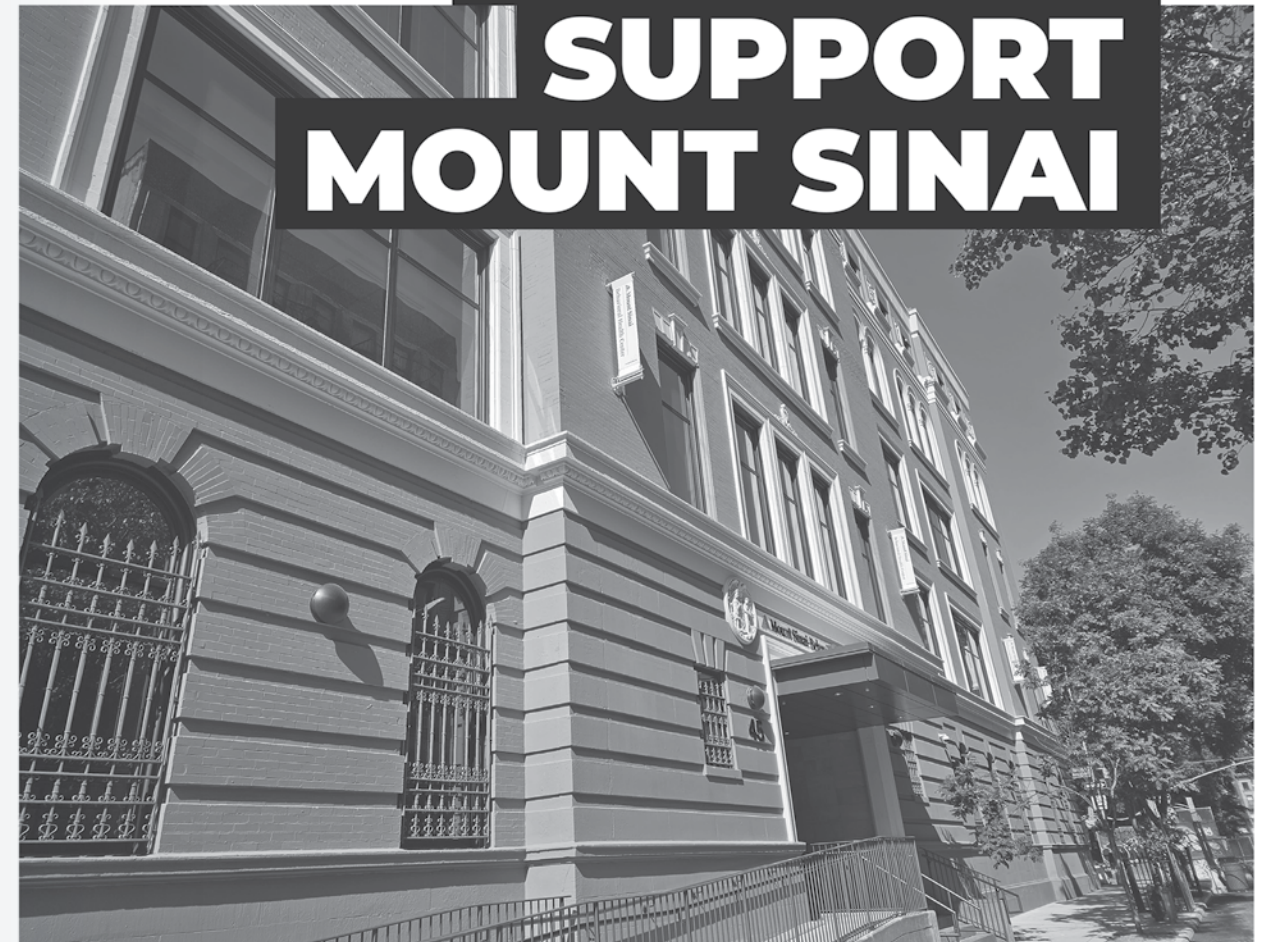
In honor of
Richard Friedman and James Tisch
and the entire Mount Sinai Health System.

We applaud your outstanding
dedication and services.

Thank you to all the doctors,
physicians, nurses, and staff that make
Mount Sinai the great place it is.

ADRIANNE AND WILLIAM SILVER

**PROUD TO
SUPPORT
MOUNT SINAI**



ENGINEERING THE AMAZING

Syska Hennessy Group is a leading global engineering firm that specializes in full-service MEP, information and communication technology, architectural lighting, vertical transportation, and commissioning.

© Syska Hennessy Group. All rights reserved.



SYSKA.COM

1185 Avenue of the Americas,
New York, NY 10036

212 921 2300



UNITY

CONSTRUCTION SERVICES, INC.

Unity Construction Services is honored to support the 41st Annual Mount Sinai Health System Crystal Party.

We extend our sincere congratulations and best wishes to Richard Friedman and James S. Tisch in recognition of their years of outstanding service and leadership.



Follow us @UnityConstructionServices



2500 MAIN STREET, SAYREVILLE, NJ 08872 T: 732.967.9800
5 Penn Plaza, 19th FLOOR, NEW YORK, NY 10001 T: 212.835.1550
BUILDUNITY.COM

The Diabetes Obesity & Metabolism Institute

Our Mission is to Cure Type 1 and Type 2 Diabetes

Deep Thanks to
Richard A. Friedman & James S. Tisch

41st Annual Mount Sinai Health System Crystal Party

Chair: Andrew F. Stewart, MD
Director of the Diabetes, Obesity and Metabolism Institute
Irene and Dr. Arthur Fishberg
Professor of Medicine
Icahn School of Medicine at Mount Sinai





The Mount Sinai Auxiliary Board
extends our deepest appreciation to tonight's honorees
Richard A. Friedman and James S. Tisch

for their exemplary leadership and steadfast guidance,
which has been instrumental in advancing the mission of
the Mount Sinai Health System.

AUXILIARY BOARD OFFICERS
President: Joanna Sirulnick
Vice President: Leslie May Blauner
Vice President: Lisa Lowenthal Pruzan
Secretary: Brooke Effron
Treasurer: Malva Rabinowitz
Assistant Treasurer: Holly Zimmerman

The Auxiliary Board promotes the general welfare of patients and families by
complementing clinical activities with a variety of social and educational services that have a
vital impact on The Mount Sinai Hospital and the Icahn School of Medicine at Mount Sinai.
We share the Hospital's mission to provide compassionate and exceptional patient care
in the many communities we serve.

In honor of
James S. Tisch and Richard A. Friedman



1580 York Avenue
New York, NY 10028

HONORING
RICHARD A. FRIEDMAN AND JAMES S. TISCH
FOR THEIR SERVICE TO MOUNT SINAI.

EBBY ELAHI, MD
ANDREW P SCHWARTZ, MD
SUSAN ZOLTAN, MD
SAMMI SHIRAZI, OD

SPECIALIZING IN COMPREHENSIVE OPHTHALMOLOGY,
FACIAL PLASTIC SURGERY AND CATARACT SURGERY

1034 FIFTH AVENUE NEW YORK, NY 10028
212.570.0707 WWW.FAEYE.COM



Richard and James-
cheers to a job well done!

Thank you for your service and leadership as
Co-Chairs of the Mount Sinai Boards of Trustees.

WILLIAM AND JUDITH GREENBLATT

Thanks to all at Mount Sinai
who provide such superior care to
our community.

**THE HIGH FIVE FOUNDATIONS
THE KAMINSKY FAMILIES**

HKS

Improving Health,
Every Community,
Every Project,
Every Time.

hksinc.com

J.P.Morgan

Your Success Deserves Recognition.

J.P. Morgan is proud to support Icahn School of Medicine at Mount Sinai

To learn more about J.P. Morgan, visit jpmorganchase.com/commercial

© 2026 Chase, J.P. Morgan, JPMorgan Chase are marketing names for certain businesses of JPMorgan Chase & Co. and its affiliates and subsidiaries worldwide (collectively, "JPMC", "We", "Our" or "Us", as the context may require).



A toast to Rich Friedman and James Tisch,
Co-Chairs of the Mount Sinai Boards of Trustees.

I am deeply grateful for your
leadership, guidance, and friendship.
Your dedication to Mount Sinai and its mission has
strengthened the institution and helped advance its
commitment to exceptional patient care,
groundbreaking research, and service to our community.

SCOTT M. PITTMAN
MOUNT SINAI INVESTMENT OFFICE

Wishing The Mount Sinai Hospital
continued medical success.

OLYMPIC TORCH
CONTRACTING CO., INC.



S. Rejeili Architect PLLC

IS PROUD TO SUPPORT

MOUNT SINAI
CRYSTAL PARTY

147 West 35 Street Suite 404 New York NY 10001
212 460 5511
sra@srejiliarchitect.com



Mount Sinai Doctors • Long Island | Greenlawn, NY

WE ARE PROUD TO SUPPORT THE
**Mount Sinai Health System
Crystal Party**

Congratulations to this year's honorees

Richard A. Friedman
and
James S. Tisch

SIMONE[®]
DEVELOPMENT COMPANIES

simdev.com



The United States Tennis Association
is proud to be a partner of
Mount Sinai Health System.

Your leadership and dedication
have inspired us all to reach higher
and work harder to make
a difference in more lives.

Your Friends at the USTA



©2026 USTA. Photo credit: Mike Lawrence/USTA

In honor of Richard Friedman's
long standing commitment and tireless efforts
to foster a sense of community and support
for the Mount Sinai Health System.

EMILY AND PAUL SUTTON

Congratulations to Mount Sinai,
Richard Friedman and James Tisch
for their incredible impact on the health
and well-being of so many throughout the
New York City area.

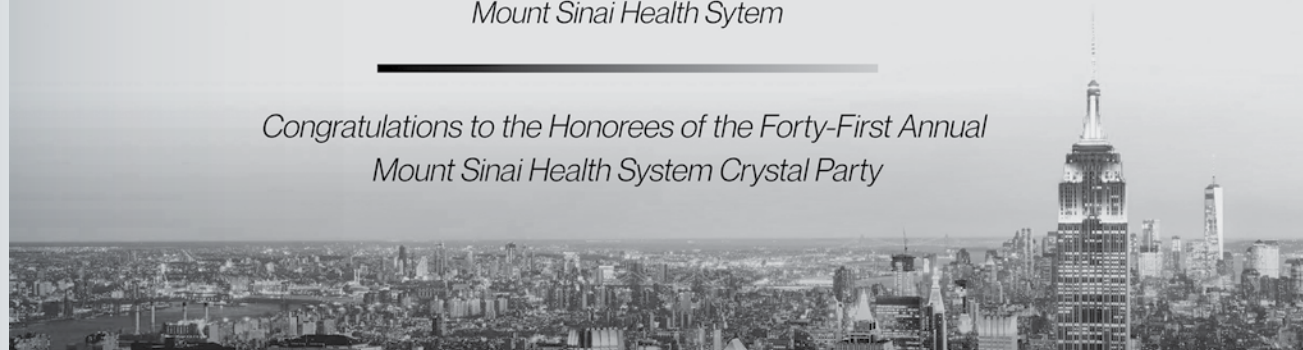
BETH AND EARLE YAFFA



Advancing Health Equity to Deliver Quality Care and Excellence for All

Pamela Abner, MPA, CPXP,
Senior Vice President and System Health Equity Officer
Mount Sinai Health System

*Congratulations to the Honorees of the Forty-First Annual
Mount Sinai Health System Crystal Party*



Congratulations

**RICHARD A. FRIEDMAN
JAMES S. TISCH**

FOR YOUR

EXTRAORDINARY LEADERSHIP

AT THE

MOUNT SINAI HEALTH SYSTEM

HOWELL INDUSTRIES



PRO-ACTIVE MAINTENANCE, LLC
Fan Repair & Vibration Specialists

Phone: 212-971-1362
Fax: 212-208-4515
Mobile: 917-363-6514

Robert J Rine 350 5th Ave, 59th Floor
President New York, NY 10118
pro.active.maintenance@gmail.com

The Nash Family Department of Neuroscience
Celebrates the **Mount Sinai Health System**

41st Annual Crystal Party



Celebrating
**Richard A. Friedman and
James S. Tisch**

—
Robert "Red" Schiller, MD
and the faculty and staff of the
Department of Family Medicine
& Community Health



THE INSTITUTE
FOR
FAMILY HEALTH
www.institute.org

*Over 260 family
physicians with
many in
leadership
positions at Mount
Sinai and its
affiliated practices.*

Drug Discovery Institute
Celebrates the
Mount Sinai Health System

41st ANNUAL

CRYSTAL PARTY





Enjoy the 2026 Mount Sinai Health System Crystal Party photos, which will be available at 5:00pm on Friday, May 29.

Please visit:

<https://giving.mountsinai.org/crystalparty>

Proud to support the
Mount Sinai Health System and its
commitment to advancing patient care,
pioneering research, and strengthening
the health and well-being of
communities for years to come.

Edge Principal Advisors, LLC



Richard A. Friedman and James S. Tisch

Congratulations on your extraordinary
leadership as Co-Chairs of the
Mount Sinai Health System Boards of Trustees.

Your lasting impact will be felt
for years to come.



THE O'TOOLE
FAMILY FOUNDATION